



APAVISA

fantasy



feel the  
color

A low-angle, black and white photograph of a wooden ceiling. The ceiling consists of several parallel wooden planks, with dark, vertical wooden beams supporting them. The perspective is looking upwards, creating a sense of height and depth. The lighting is dramatic, with strong shadows and highlights on the wood. In the center of the image, the word "fantasy" is written in a bold, red, lowercase sans-serif font.

fantasy



**Fantasy serie 45x90**  
(44,63 x 89,46 cm - 17.57" x 35.22")

**Fantasy white natural 45x90**

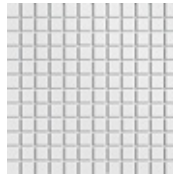
**G-1284**

\*

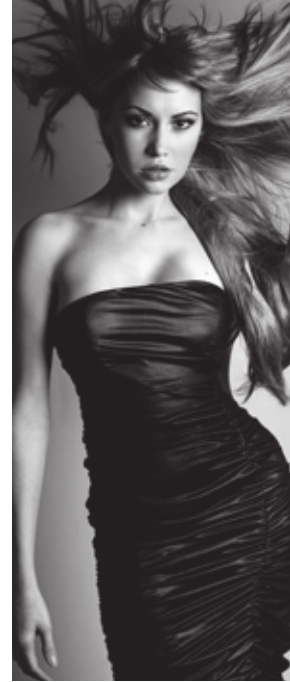


NON REFLEX  
SURFACE

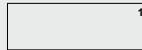
### Special pieces. Piezas especiales



**Nanofantasy white natural mosaico 5X5**  
(29,75 x 29,75 cm - 11,71" x 11,71")  
G-1688

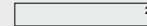


### NANOFANTASY collection



**Nanofantasy serie 30x90**  
(29,75 x 89,46 cm - 11.71" x 35.22")  
**Nanofantasy white natural 30x90**  
**Nanofantasy white sound 30x90**

**G-1224**  
**G-1246**



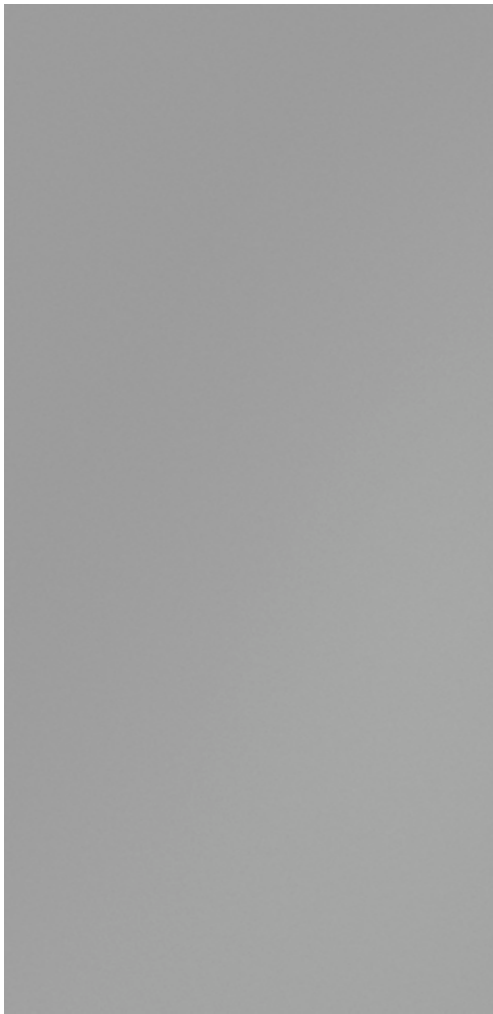
**Nanofantasy serie 15x90**  
(14,74 x 89,46 cm - 5.80" x 35.22")  
**Nanofantasy white natural 15x90**  
**Nanofantasy white sound 15x90**

**G-1322**  
**G-1352**



fantasy

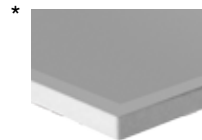
GREY NATURAL



**Fantasy serie 45x90**  
(44,63 x 89,46 cm - 17.57" x 35.22")

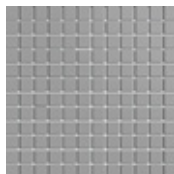
**Fantasy grey natural 45x90**

**G-1284**



NON REFLEX  
SURFACE

### Special pieces. Piezas especiales



**Nanofantasy grey natural mosaico 5X5**  
(29,75 x 29,75 cm - 11,71" x 11,71")  
G-1688

### NANOFANTASY collection



**Nanofantasy serie 30x90**  
(29,75 x 89,46 cm - 11.71" x 35.22")  
**Nanofantasy grey natural 30x90**  
**Nanofantasy grey sound 30x90**

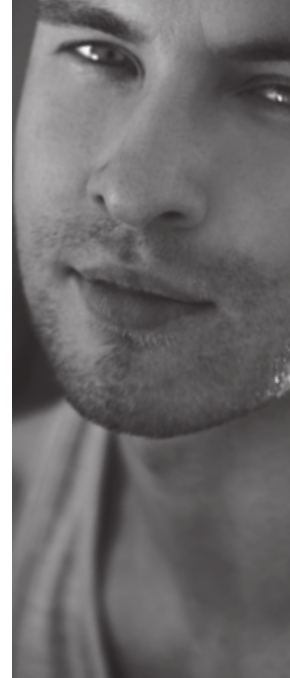
**G-1224**  
**G-1246**



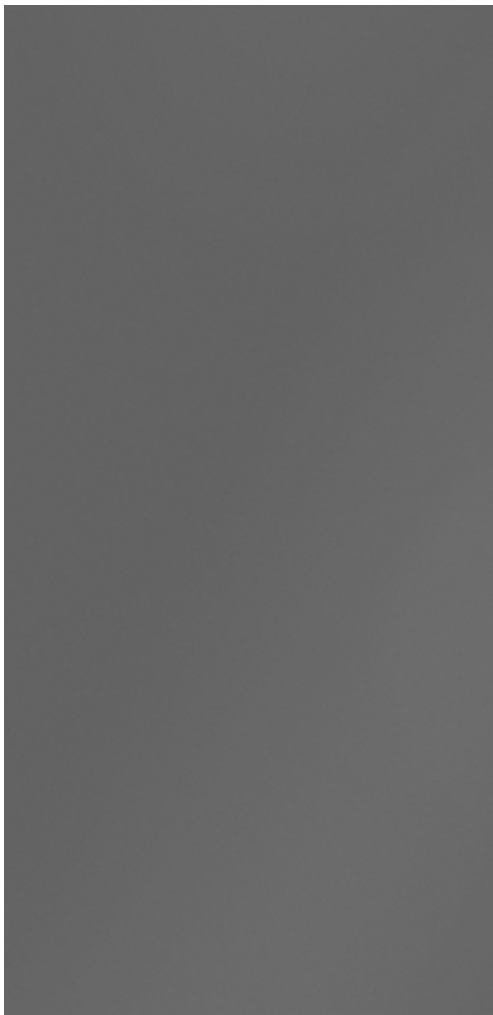
**Nanofantasy serie 15x90**  
(14,74 x 89,46 cm - 5.80" x 35.22")  
**Nanofantasy grey natural 15x90**  
**Nanofantasy grey sound 15x90**

**G-1322**  
**G-1352**

\* DOUBLE LOADING / DOBLE CARGA  
RECTIFIED AND WITHOUT BEVEL EDGE FINISH PRODUCT / PRODUCTO RECTIFICADO Y NO BISELADO



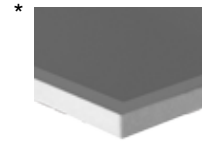




**Fantasy serie 45x90**  
(44,63 x 89,46 cm - 17.57" x 35.22")

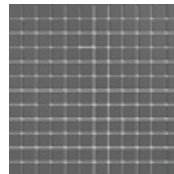
**Fantasy anthracite natural 45x90**

**G-1284**

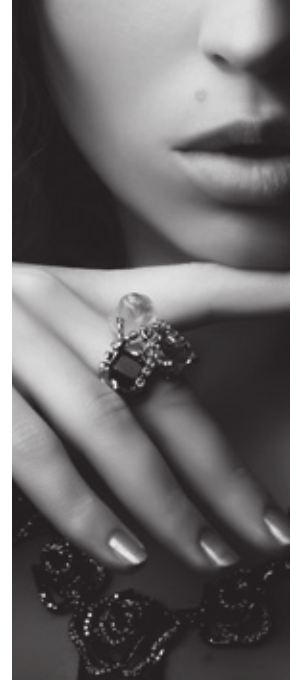


NON REFLEX  
SURFACE

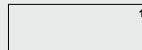
### Special pieces. Piezas especiales



**Nanofantasy anthracite natural mosaico 5X5**  
(29,75 x 29,75 cm - 11,71" x 11,71")  
G-1688

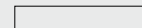


### NANOFANTASY collection



**Nanofantasy serie 30x90**  
(29,75 x 89,46 cm - 11,71" x 35,22")  
**Nanofantasy anthracite natural 30x90**  
**Nanofantasy anthracite sound 30x90**

**G-1224**  
**G-1246**



**Nanofantasy serie 15x90**  
(14,74 x 89,46 cm - 5,80" x 35,22")  
**Nanofantasy anthracite natural 15x90**  
**Nanofantasy anthracite sound 15x90**

**G-1322**  
**G-1352**



$e_{mc^2+x} = 0$



(Tecnologia)

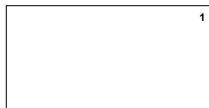
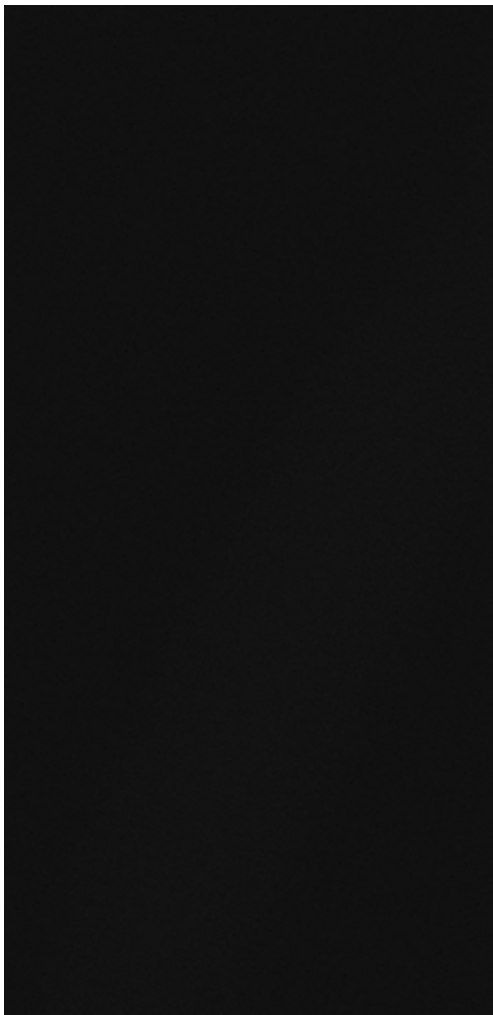
(Aula polivalente)

laboratorio de química  
↑  
(p-2)

UC  
Universidad de Ingeniería

fantasy

BLACK NATURAL



**Fantasy serie 45x90**  
(44,63 x 89,46 cm - 17.57" x 35.22")

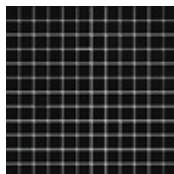
**Fantasy black natural 45x90**

**G-1284**

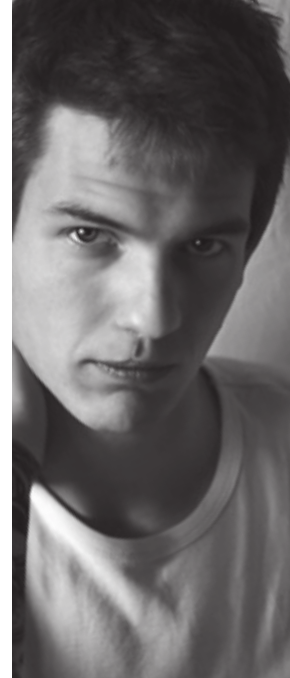


NON REFLEX  
SURFACE

### Special pieces. Piezas especiales



**Nanofantasy black natural mosaico 5X5**  
(29,75 x 29,75 cm - 11,71" x 11,71")  
G-1688



### NANOFANTASY collection



**Nanofantasy serie 30x90**  
(29,75 x 89,46 cm - 11.71" x 35.22")  
**Nanofantasy black natural 30x90**  
**Nanofantasy black sound 30x90**

**G-1224**  
**G-1246**



**Nanofantasy serie 15x90**  
(14,74 x 89,46 cm - 5.80" x 35.22")  
**Nanofantasy black natural 15x90**  
**Nanofantasy black sound 15x90**

**G-1322**  
**G-1352**

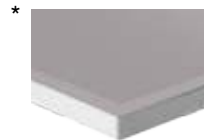
\* DOUBLE LOADING / DOBLE CARGA  
RECTIFIED AND WITHOUT BEVEL EDGE FINISH PRODUCT / PRODUCTO RECTIFICADO Y NO BISELADO





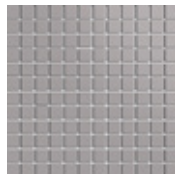
**Fantasy serie 45x90**  
(44,63 x 89,46 cm - 17.57" x 35.22")

**Fantasy moss natural 45x90** **G-1284**

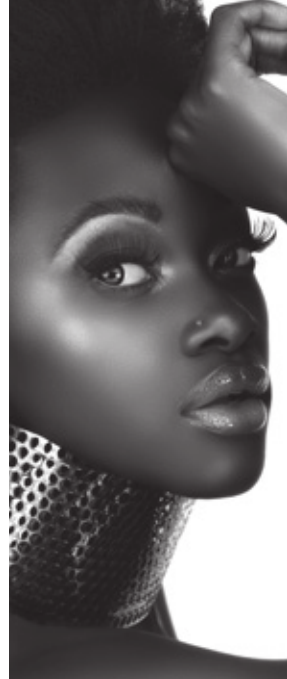


NON REFLEX  
SURFACE

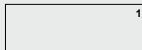
### Special pieces. Piezas especiales



**Nanofantasy moss natural mosaico 5X5**  
(29,75 x 29,75 cm - 11,71" x 11,71")  
G-1688

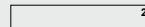


### NANOFANTASY collection



**Nanofantasy serie 30x90**  
(29,75 x 89,46 cm - 11.71" x 35.22")  
**Nanofantasy moss natural 30x90**  
**Nanofantasy moss sound 30x90**

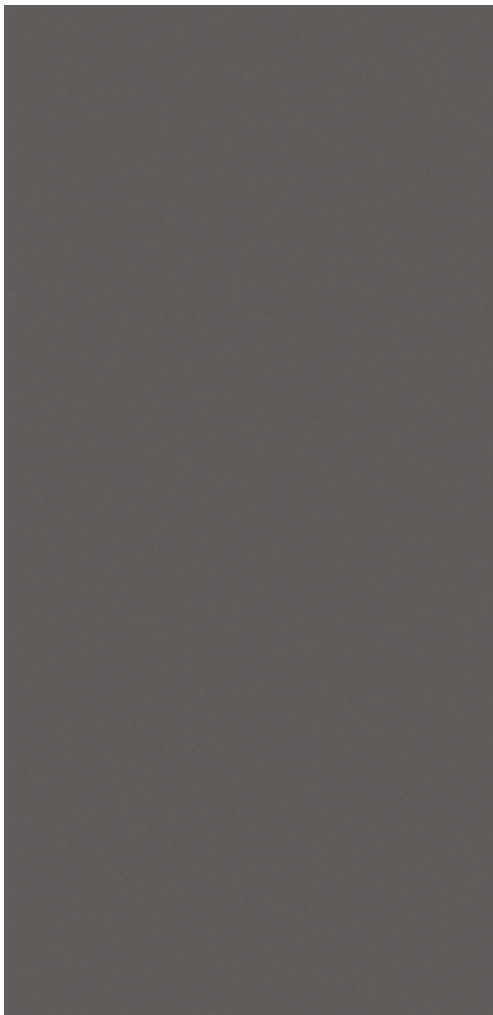
**G-1224**  
**G-1246**



**Nanofantasy serie 15x90**  
(14,74 x 89,46 cm - 5.80" x 35.22")  
**Nanofantasy moss natural 15x90**  
**Nanofantasy moss sound 15x90**

**G-1322**  
**G-1352**





**Fantasy serie 45x90**  
(44,63 x 89,46 cm - 17.57" x 35.22")

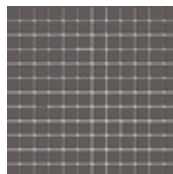
**Fantasy brown natural 45x90**

**G-1284**



NON REFLEX  
SURFACE

### Special pieces. Piezas especiales



Nanofantasy brown natural mosaico 5X5  
(29,75 x 29,75 cm - 11,71" x 11,71")  
G-1688



### NANOFANTASY collection



**Nanofantasy serie 30x90**  
(29,75 x 89,46 cm - 11,71" x 35,22")  
**Nanofantasy brown natural 30x90**  
**Nanofantasy brown sound 30x90**

**G-1224**  
**G-1246**



**Nanofantasy serie 15x90**  
(14,74 x 89,46 cm - 5,80" x 35,22")  
**Nanofantasy brown natural 15x90**  
**Nanofantasy brown sound 15x90**

**G-1322**  
**G-1352**



combine with

**nano**fantasy  
collection





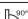
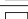





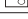








Product: nanofantasy white sound 15x90, nanofantasy grey sound 15x90, nanofantasy moss sound 15x90, nanofantasy anthracite sound 15x90, nanofantasy brown sound 15x90 and fantasy black natural 45x90



# NANOFANTASY collection. TECHNICAL CHARACTERISTICS / Colección NANOFANTASY. CARACTERÍSTICAS TÉCNICAS

TECHNICAL CHARACTERISTICS CARACTERÍSTICAS TÉCNICAS	STANDARD TEST METHOD MÉTODO DE LA NORMA	STANDARD PRESCRIBED VALUES VALOR PRESCRITO POR LA NORMA	APAVISA VALUE VALOR APAVISA
<b>MEASUREMENTS SURFACE APPEARANCE / DIMENSIONES Y ASPECTO SUPERFICIAL</b>			
 <b>LENGTH AND WIDTH / LONGITUD Y ANCHURA</b>	UNE - EN ISO 10545 - 2	+/- 0.6 % max	+/- 0.2 %
 <b>THICKNESS / ESPESOR</b>	UNE - EN ISO 10545 - 2	+/- 5.0 % max	+/- 2.0 %
 <b>ORTHOGONALITY / ORTOGONALIDAD</b>	UNE - EN ISO 10545 - 2	+/- 0.6 % max	+/- 0.2 %
 <b>SURFACE FLATNESS / PLANITUD DE SUPERFICIE</b>	UNE - EN ISO 10545 - 2	+/- 0.5 % max	+/- 0.2 %
<b>PHYSICAL PROPERTIES / PROPIEDADES FÍSICAS</b>			
 <b>WATER ABSORPTION / ABSORCIÓN DE AGUA</b>	UNE - EN ISO 10545 - 3	≤ 0.5 %	> 0.1 %
 <b>BENDING RESISTANCE / RESISTENCIA A LA FLEXIÓN</b>	UNE - EN ISO 10545 - 4	≥ 35 N/mm <sup>2</sup>	- <sup>2</sup>
 <b>RESISTANCE TO ABRASION / RESISTENCIA A LA ABRASIÓN</b>	UNE - EN ISO 10545 - 6	≤ 175 mm <sup>3</sup>	-
 <b>THERMAL EXPANSION COEFFICIENT / COEF. DE DILATACIÓN TÉRMICA</b>	UNE - EN ISO 10545 - 8	AVAILABLE METHOD MÉTODO DISPONIBLE	-
 <b>TEMPERATURE SHOCK RESISTANCE / RESISTENCIA AL CHOQUE TERMICO</b>	UNE - EN ISO 10545 - 9	NO SURFACE DEFECTS SHOULD BE VISIBLE NO DEBE PRESENTAR DEFECTOS VISIBLES	DURABLE / Resistente
 <b>RESISTANCE TO COLD / RESISTENCIA A LA HELADA</b>	UNE - EN ISO 10545 - 12	NO SURFACE DEFECTS OR CRACKS SHOULD BE VISIBLE NO DEBE PRESENTAR DEFECTOS O ROTURAS VISIBLES	ANTI-ICE / Antihielo
 <b>ANTI - SLIP / ANTIDESLIZAMIENTO</b>	DIN 51130		-
	DIN 51097		-
	UNE - ENV 12633	WET TEST	- **
		DRY TEST	- ***
 <b>COLOUR RESISTANCE TO LIGHT / RESISTENCIA DEL COLOR A LA LUZ</b>	DIN 51094	THERE SHOULD BE NO COLOUR VARIATIONS	NO ALTERATIONS
<b>CHEMICAL PROPERTIES / PROPIEDADES QUÍMICAS</b>			
 <b>CHEMICAL RESISTANCE / RESISTENCIA QUÍMICA</b>	UNE - EN ISO 10545 - 13	THERE SHOULD BE NO VISIBLE CHANGES NO DEBE PRESENTAR ALTERACIONES VISIBLES A LOS ATAQUES QUÍMICOS	RESISTANT/ resistente
 <b>RESISTANCE TO STAINING / RESISTENCIA A LAS MANCHAS</b>	UNE - EN ISO 10545 - 14	THERE SHOULD BE NO VISIBLE CHANGES NO DEBE PRESENTAR ALTERACIONES VISIBLES A LOS ATAQUES QUÍMICOS	NO VISIBLE DEFECTS SIN DEFECTOS VISIBLES

\*Average value. Test issued in Apavisa internal laboratory on - on - For any official certification or verification of the values listed, contact the Technical Department through [dpto.tecnico@apavisa.com](mailto:dpto.tecnico@apavisa.com) / Valor de media. Prueba realizada en laboratorio interno de Apavisa sobre el producto - a fecha de -. Para cualquier certificación oficial o verificación de los valores mencionados contactar con el Departamento Técnico de Apavisa a través de [dpto.tecnico@apavisa.com](mailto:dpto.tecnico@apavisa.com).

\*\* Test done in - Average test result value on -. Consult specific product test result value before supplying. Possibility of other tests by request. Every natural finish product can be manufactured on a higher non slip grade by request. / Prueba realizada sobre el producto -. Valor de media a fecha de -. Consultar valor de un producto específico antes del suministro. Posibilidad de realizar ensayos diferentes. Los productos con acabado mate pueden ser fabricados con un grado de antideslizamiento mayor bajo solicitud expresa.

\*\*\* Dry Test, according to document DA DB-SUA/3 (Código Técnico de la Edificación) M<sup>o</sup> de Fomento. Test realized in internal laboratory in the current consignment. / Ensayo realizado, según documento DA DB-SUA/3 (Código Técnico de la Edificación) M<sup>o</sup> de Fomento. Ensayo realizado en laboratorio interno en la actual partida producida.

\*\*\*\* Average test result value on November 2008. / Valor de media a fecha Noviembre de 2008.

APAVISA PORCELÁNICO SL assumes no liability for any printing errors. The technical characteristics contained in this catalog are mean values of our products. To carry out any orders that are requested consultations with the technical characteristics of the particular model to APAVISA PORCELÁNICO SL. All features and specifications are based on information available at the time of printing this catalog and may be changed without notice, according to market conditions, technological innovations and / or any other factor, without incurring any liability. / APAVISA PORCELÁNICO S.L. no asume ninguna responsabilidad por posibles errores de impresión. Las características técnicas que constan en el presente catálogo son valores medios de nuestros productos. Para la realización de cualquier pedido se solicita que sean consultadas las características técnicas del modelo en concreto a APAVISA PORCELÁNICO S.L. Todas las características y especificaciones técnicas están basadas en la información disponible en el momento de la impresión del presente catálogo y podrán ser modificadas sin previo aviso, de acuerdo a las circunstancias del mercado, innovaciones tecnológicas y/o cualquier otro factor, sin incurrir en ningún tipo de responsabilidad.

Distributed by - Distribuido por - Distribuito da - Vertrieben durch - Distribue par



# APAVISA

Ctra. Castellón - San Juan de Moró, hm. 7,5 - 12130 SAN JUAN DE MORÓ (Castellón) Spain  
Tel. +34 964 701 120 - Export Fax +34 964 701 067 - Fax Nacional 964 701 195 - info@apavisa.com

[www.apavisa.com](http://www.apavisa.com)



PLEASE RECYCLE WHEN OBSOLETE  
POR FAVOR RECLICAR CUANDO QUEDE OBSOLETO  
WENN NICHT MEHR AKTUELL, RECYCELN  
PER FAVORE RICICLARLO QUANDO VECCHIO  
S'IL VOUS PLAIT, MERCI DE RECYCLER