

L

ES

LES BOIS

WOOD POETRY

BO

IS



KRONOS

CERAMICHE

LES BOIS

WOOD POETRY



KRONOS

CERAMICHE



# LES BOIS

WOOD POETRY

KRONOS REINVENTA L'IMMAGINARIO DEL GRÈS EFFETTO LEGNO, CON UN PROGETTO CHE ESPRIME IL VALORE DELLA MATERIA ATTRAVERSO LA CURA DEL DETTAGLIO, OGNI VENATURA, OGNI NODO, OGNI IRREGOLARITÀ DIVENTA ESPRESSIONE DI ELEGANZA TATTILE DECLINATA IN 5 NUANCE DAI COLORI INTENSI CON UNA PARTICOLARE SENSIBILITÀ PER I COLORI SCURI.

KRONOS RÉINVENTE L'IMAGINAIRE DU GRÈS EFFET BOIS, AVEC UN PROJET QUI EXPRIME LA VALEUR DE LA MATIÈRE À TRAVERS LE SOIN DU DÉTAIL : CHAQUE VEINURE, CHAQUE NŒUD, CHAQUE IRRÉGULARITÉ DEVIENNENT L'EXPRESSION D'UNE ÉLÉGANCE TACTILE DÉCLINÉE DANS 5 NUANCES AUX COULEURS INTENSES AVEC UNE SENSIBILITÉ PARTICULIÈRE POUR LES COULEURS FONCÉES.

KRONOS REINVENTS THE COLLECTIVE IDEA OF WOOD-EFFECT STONEWARE, WITH A PROJECT DESIGNED TO EXPRESS THE VALUE OF THE MATERIAL THROUGH ATTENTION TO DETAIL, IN WHICH EACH GRAIN PATTERN, EACH GNARL AND EACH IRREGULAR FEATURE BECOMES AN EXPRESSION OF TACTILE ELEGANCE, IN 5 INTENSE SHADES, WITH A PARTICULAR ACCENT ON DARK COLOURS.

KRONOS ERFINDET DIE IDEE DES FEINSTEINZEUGS MIT HOLZOPTIK MIT EINEM PROJEKT NEU, DAS DEN WERT DES MATERIALS ANHAND DER DETAILLIEBE ZUM AUSDRUCK BRINGT: JEDE MASERUNG, JEDER KNORREN, JEDE UNREGELMÄSSIGKEIT WIRD ZUM AUSDRUCK EINER GREIFBAREN ELEGANZ, DIE IN 5 INTENSIVEN FARBNUANCEN MIT EINEM BESONDEREN AUGENMERK AUF DEN DUNKLEN FARBEN AUSGEARBEITET IST.

## COLORS



COBOLO



MOGANO



BOCOTE



SLAVONIA



SARAWA

## SIZES

10 mm  
3/8"



**80x180**  
31 1/2"x70 3/4"



**26,5x180**  
10 1/2"x70 3/4"



**20x180**  
7 7/8"x70 3/4"



**20x120**  
7 7/8"x47 1/2"



**60x120**  
23 3/8"x47 1/2"



**20x60**  
7 7/8"x23 3/8"



**20x40**  
7 7/8"x15 3/4"



**9x58,5**  
3.5"x23"



**22,5x39,5**  
8.8"x15.5"

## DECORS



**60x120**  
23 3/8"x47 1/2"

LOUVRE



**60x120**  
23 3/8"x47 1/2"

VILLANDRY



**15x120**  
6"x47 1/2"

BAGUETTE 3D



**29x120**  
11 3/4"x47 1/2"

VERSAILLES



**80x80**  
31 1/2"x31 1/2"

BATONNET 3D



**29x59**  
11 3/8"x23 3/8"

CHEVRY



**30x30**  
11 3/4"x11 3/4"

OTTONE

## 2 CM

20 mm  
3/4"



**80x180**  
31 1/2"x70 3/4"



**26,5x180**  
10 1/2"x70 3/4"



**20x120**  
7 7/8"x47 1/2"



**40x120**  
15 3/4"x47 1/2"



**40x120**  
15 3/4"x47 1/2"

# DECORS

LES BOIS



# INDEX

## LES BOIS

### COBOLO



P.12



P.14



P.18

### MOGANO



P.24



P.26



P.32

### BOCOTE



P.39



P.42



P.44

### SLAVONIA



P.54



P.57



P.59

### SARAWA



P.62



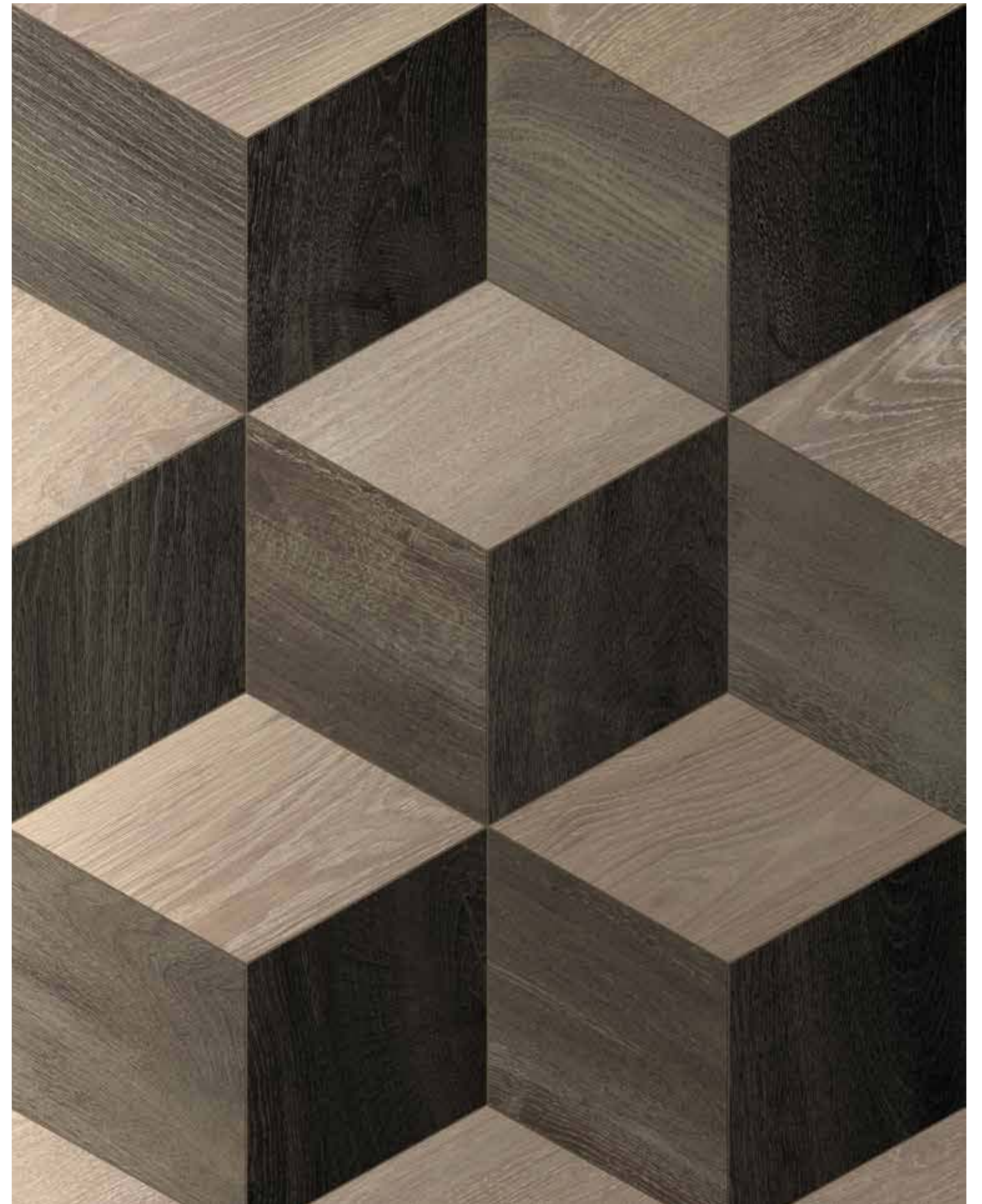
P.68



P.70

# COBOLO

LES BOIS





WALL PORFIDO 60x120  
FLOOR COBOLO 2.0 40x120  
STEPS COBOLO







FLOOR COBOLO 26,5x180 + ROMBO mod. 09: COBOLO, BOCOTE, SLAVONIA  
WALL CARRIERE DU KRONOS GENT 80x180  
OUTDOOR FLOOR COBOLO 2.0 40x120



FLOOR COBOLO 26,5x180 + ROMBO mod. 09: COBOLO, BOCOTE, SLAVONIA



FLOOR MAXI CARRIERE DU KRONOS GENT 120x120  
COUNTER BAGUETTE MO-COBOLO 29x120  
COUNTER TOP COBOLO 80x180



FLOOR MAXI CARRIERE DU KRONOS GENT 120x120  
BENCH COBOLO 80x180  
WALL BAGUETTE MO-COBOLO 29x120

# MOGANO

LES BOIS





FLOOR MOGANO 20x40 - 20x60



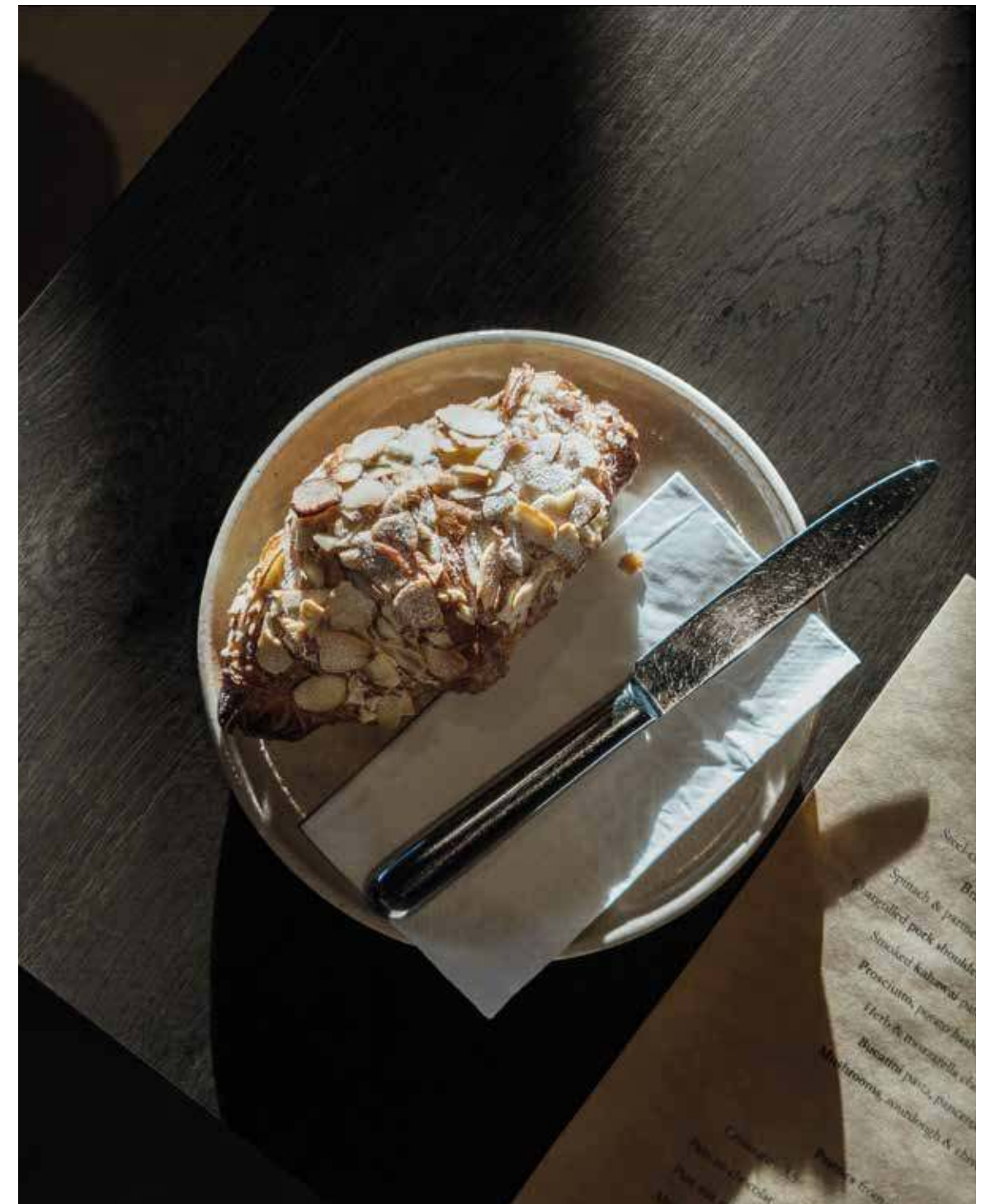
FLOOR CHEVRY MIX DARK 30x30





FLOOR MOGANO 20x180  
COUTER CARRIERE DU KRONOS NAMUR





FLOOR MOGANO 20x180  
COUTER CARRIERE DU KRONOS NAMUR





FLOOR MIX DARK CHEVRY 2.0 40x120



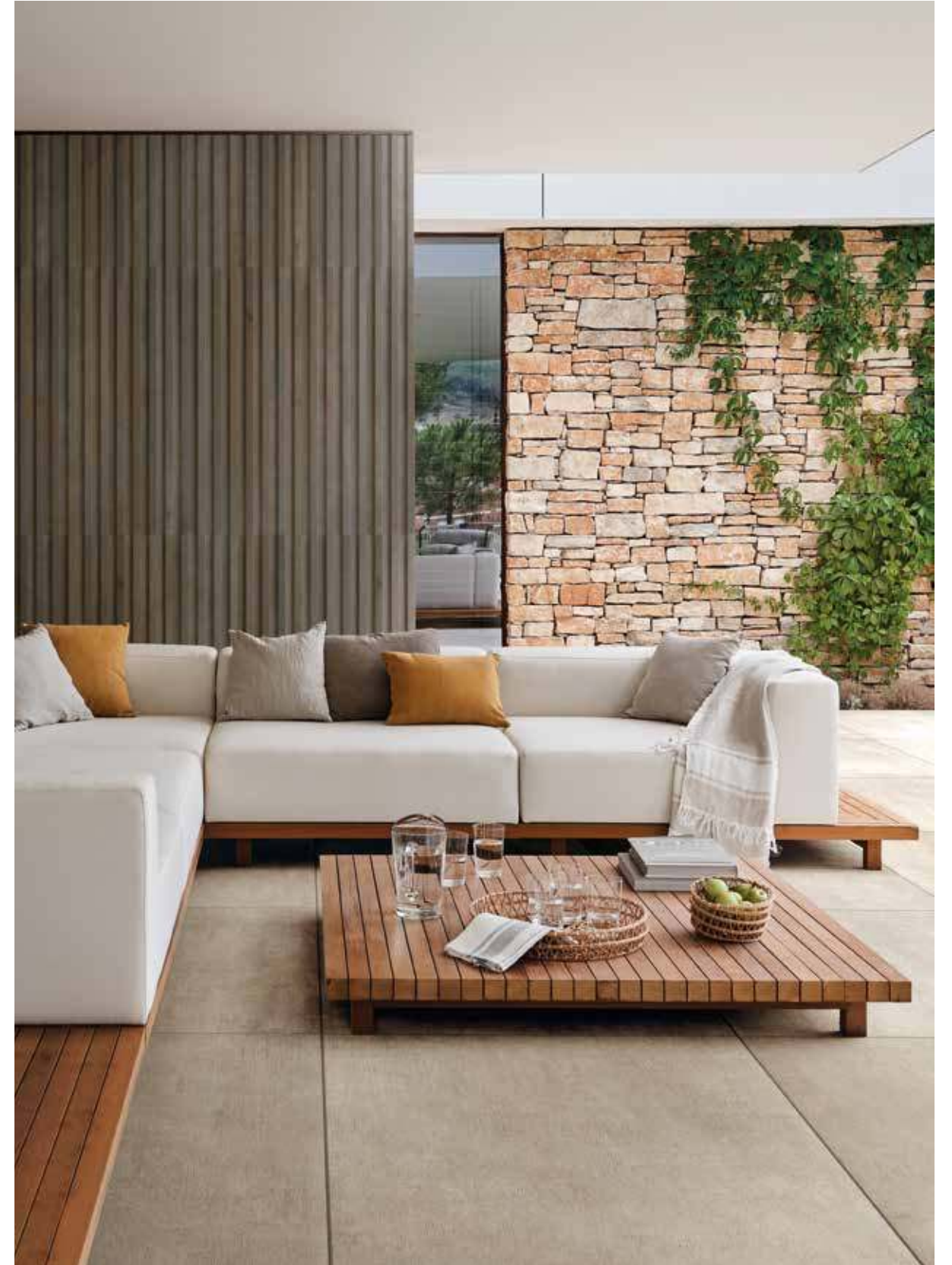
# BOCOTE

LES BOIS





FLOOR SKE2.0 PRIMA MATERIA CENERE 80x80  
WALL BOCOTE BAGUETTE 29x120  
SWIMMING POOL EDGE PORFIDO 60x120





FLOOR SKE2.0 PRIMA MATERIA CENERE 80x80  
WALL BOCOTE BAGUETTE 29x120





FLOOR BOCOTE 20x120 - 20x180





FLOOR BOCOTE 26,5x180  
WALL MAXI PRIMA MATERIA CENERE 120x240  
BOCOTE MOSAICO 15x120, tessera 2x120

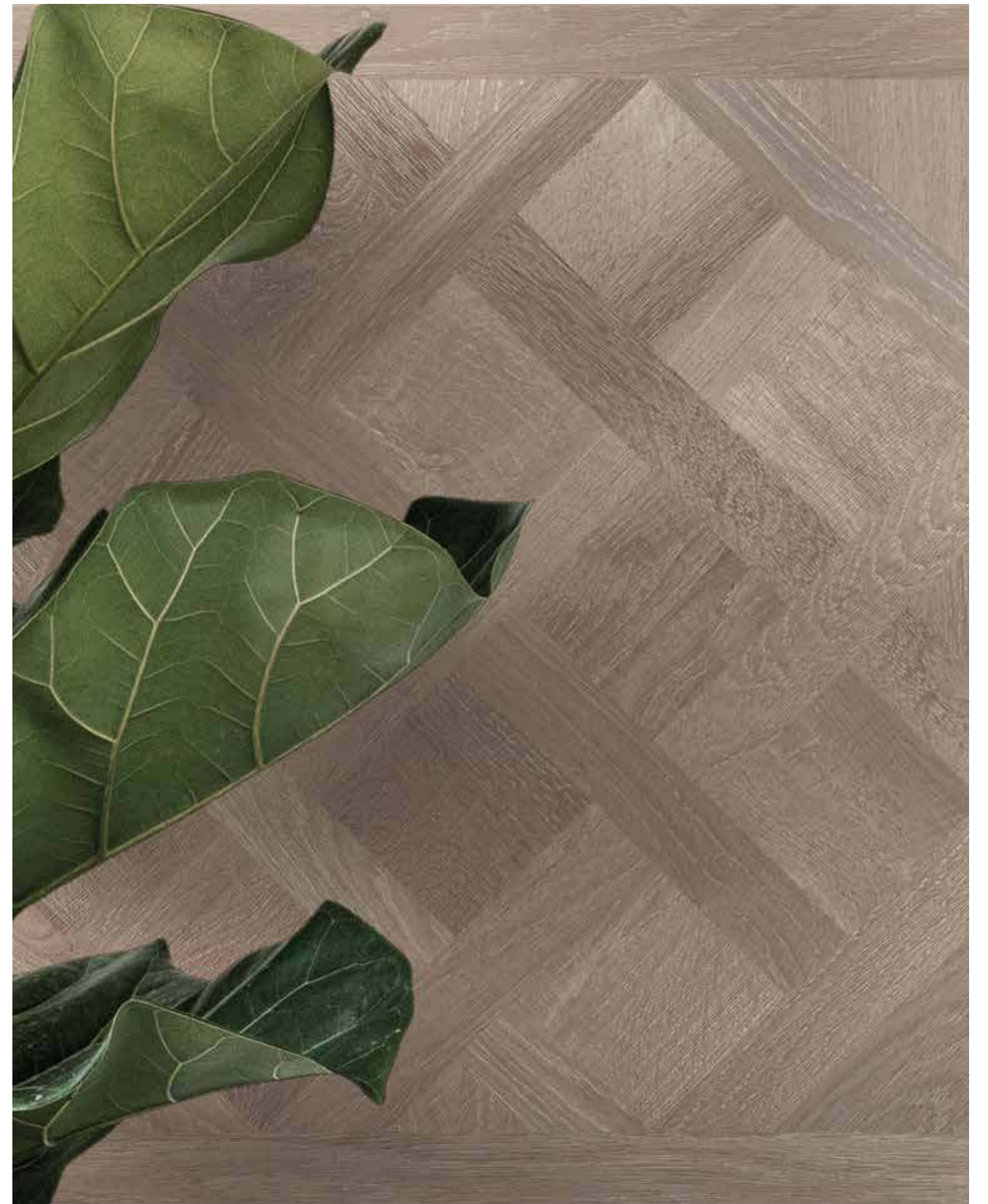




FLOOR BOCOTE 26,5x180  
WALL BOCOTE MOSAICO 15x120, tessera 2x120  
SHOWER MAXI PRIMA MATERIA CENERE 120x240

# SLAVONIA

LES BOIS





FLOOR SLAVONIA CHEVRY 2.0 40x120





FLOOR SLAVONIA CHEVRY 2.0 40x120



FLOOR SLAVONIA Chevron 9x58,5

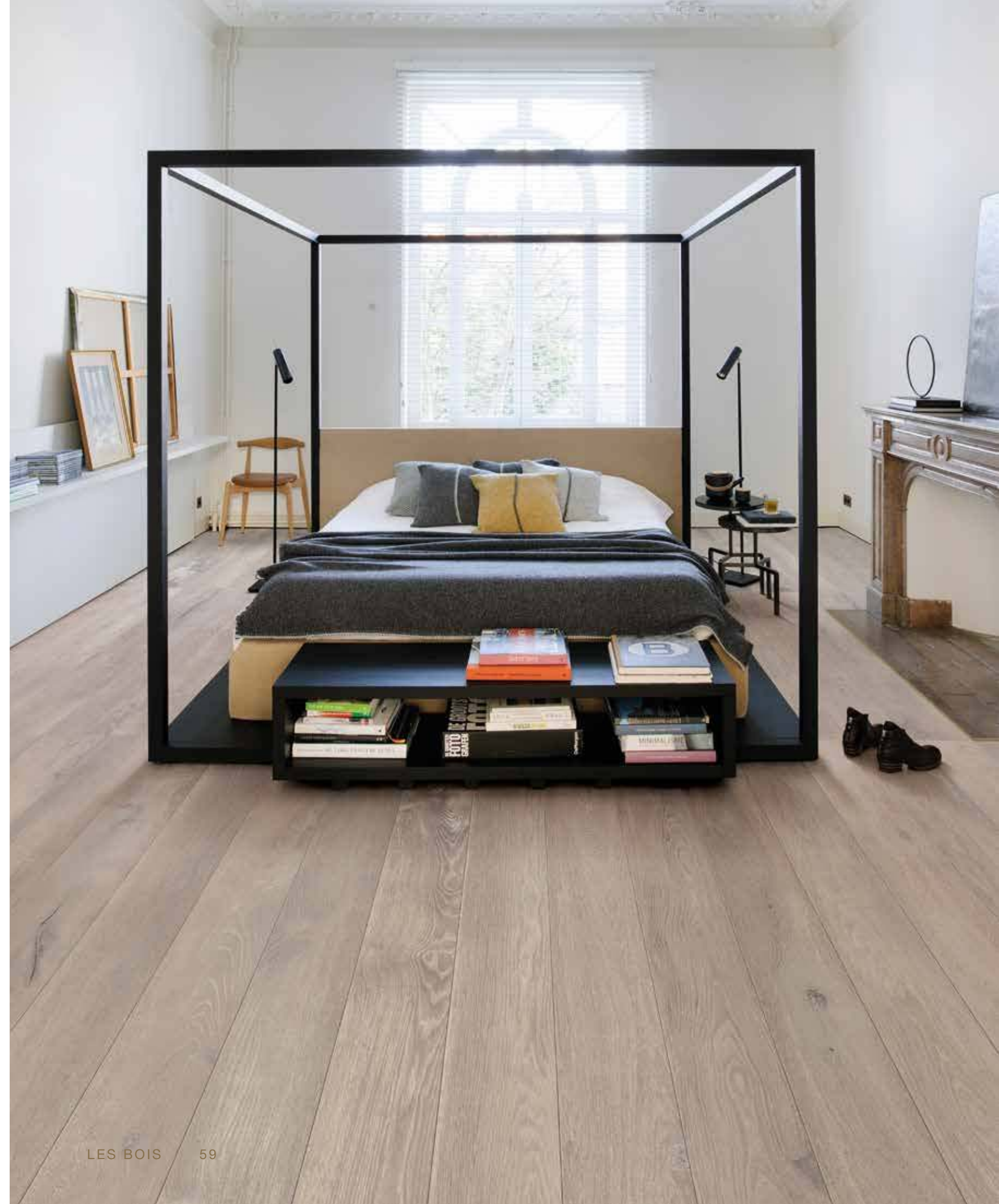




FLOOR SLAVONIA Versailles 80x80



FLOOR SLAVONIA 26,5x180



# SARAWA

LES BOIS

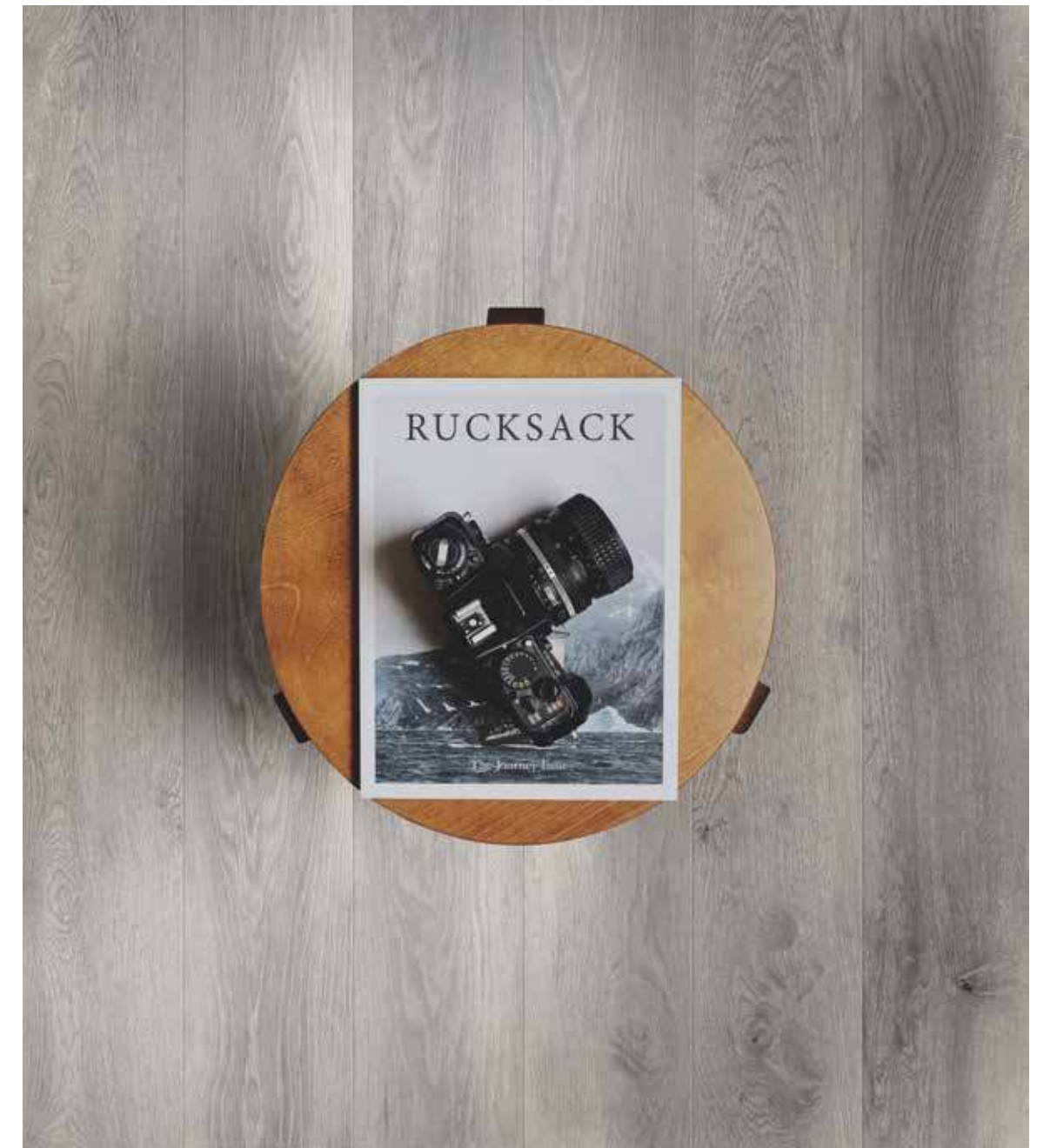








FLOOR SARAWA 26,5x180





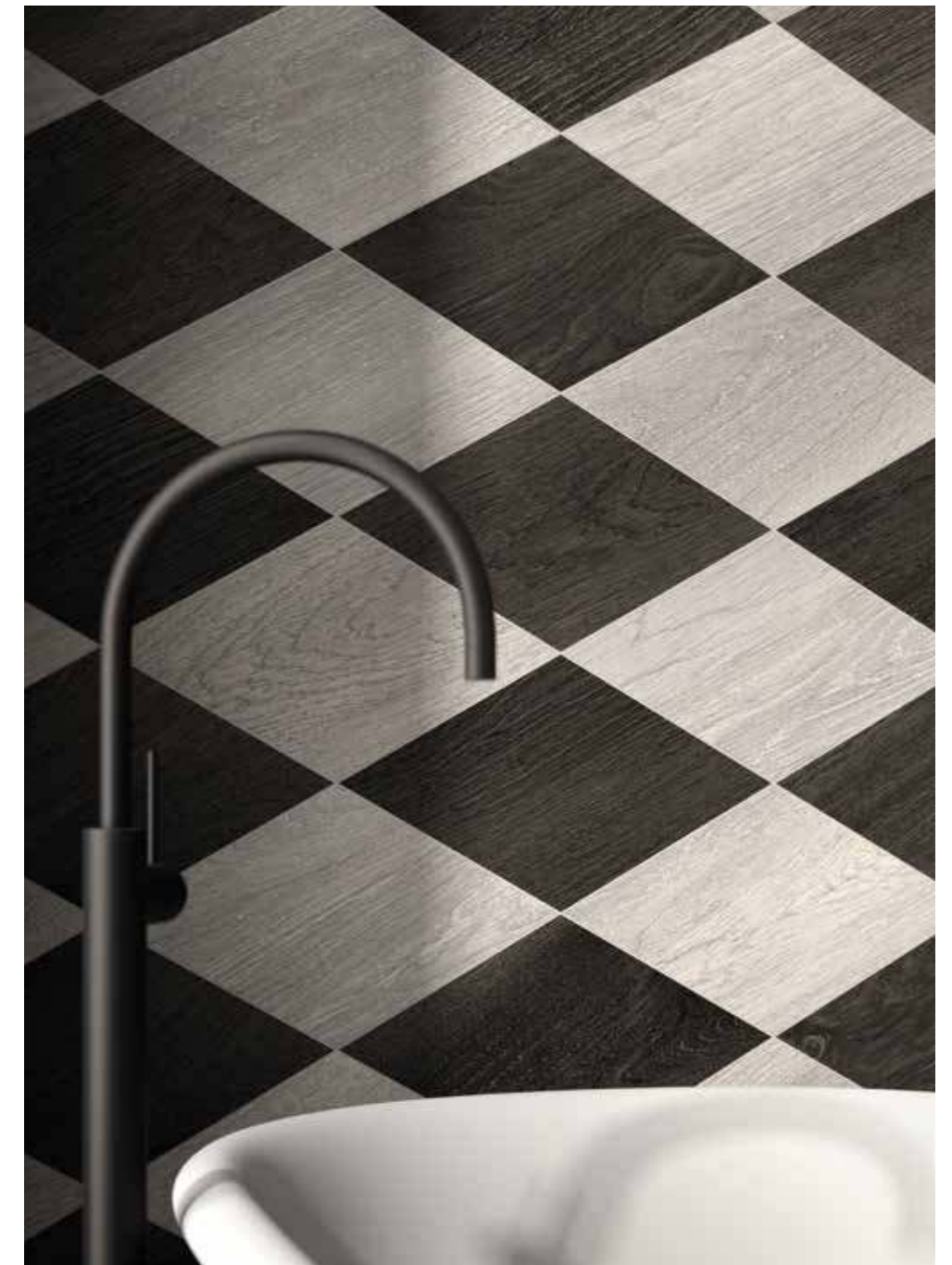
STAIRWAY SARAWA





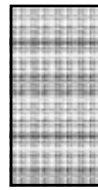
FLOOR SARAWA 20x180  
WALL SARAWA 20x120, bacchetta ottone 1x0,8x120  
TOP SARAWA 80x180  
WASH BASIN PRIMA MATERIA SANDALO  
WASH BASIN WALL PRIMA MATERIA SANDALO  
SHOWER WALL PRIMA MATERIA SANDALO 120x240  
SHOWER TRAY PRIMA MATERIA SANDALO 120x120





FLOOR SARAWA 20x180  
WALL SARAWA ROMBO 22,5x39,5 - COBOLO ROMBO 22,5x39,5

# LES BOIS



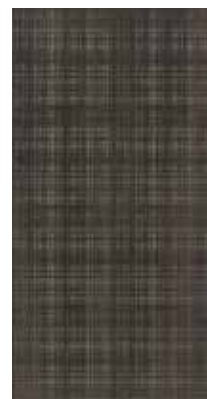
60x120 LOUVRE

SHOWER WALL COBOLO Louvre 60x120

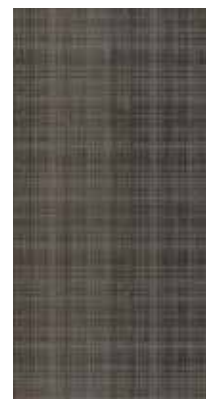


60x120 VILLANDRY

WALL MOGANO Villandry 60x120, BACCHETTA SARAWA 2x120



COBOLO



MOGANO



BOCOTE



SLAVONIA



SARAWA



COBOLO



MOGANO



BOCOTE

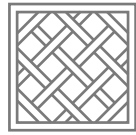


SLAVONIA



SARAWA

# LES BOIS



80x80 VERSAILLES

FLOOR BOCOTE Versailles 80x80



15x120 - 2x120

FLOOR MOSAICO COBOLO 15x120 - tessere 2x120



COBOLO



MOGANO



BOCOTE



SLAVONIA



SARAWA



COBOLO



MOGANO



BOCOTE



SLAVONIA



SARAWA

# LES BOIS



29x120 BAGUETTE 3D

WALL SLAVONIA BAGUETTE 29x120  
MAXI CARRIERE DU KRONOS BRUGES 120x240



30x30 CHEVRY

WALL SARAWA CHEVRY 30x30  
LAVABO DAVE MAXI CARRIERE DU KRONOS NAMUR 6 mm



MO-COBOLO



BOCOTE



SLAVONIA



SARAWA



COBOLO



MOGANO



BOCOTE



SLAVONIA



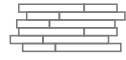
SARAWA



MIX DARK



# LES BOIS



29x59 BATONNET

WALL BATONNET DARK 3D 29x59



MIX DARK

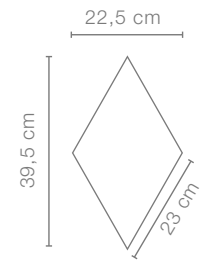
1x0,8x120 BACCHETTA OTTONE

WALL COBOLO 20x120, 60x120  
BACCHETTA OTTONE 1x0,8x120



# LES BOIS

## ROMBO



Disponibile in tutti i colori  
Available in all colors:



COBOLO



MOGANO



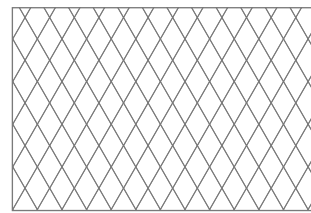
BOCOTE



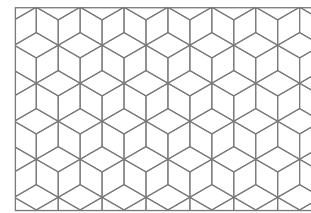
SLAVONIA



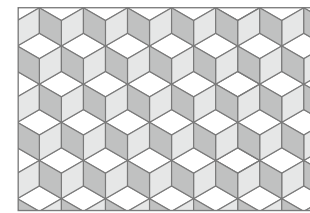
SARAWA



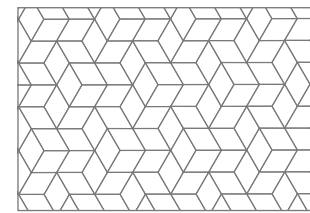
mod. 01  $\diamond$  100%



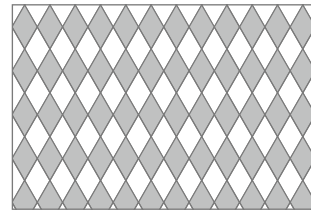
mod. 05  $\diamond$  100%



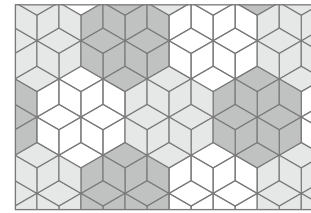
mod. 09  $\diamond$  33,3%  
 $\diamond$  33,3%  
 $\diamond$  33,3%



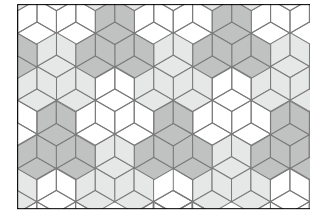
mod. 12  $\diamond$  100%



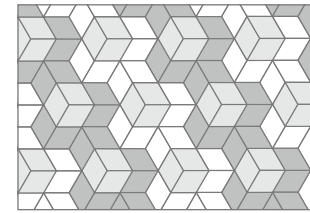
mod. 02  $\diamond$  50%  
 $\diamond$  50%



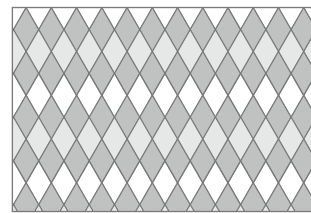
mod. 06  $\diamond$  33,3%  
 $\diamond$  33,3%  
 $\diamond$  33,3%



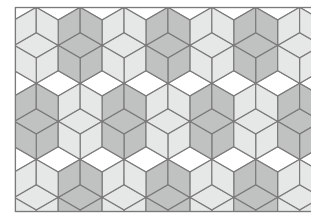
mod. 10  $\diamond$  33,3%  
 $\diamond$  33,3%  
 $\diamond$  33,3%



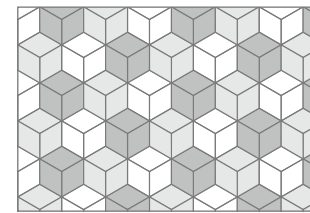
mod. 13  $\diamond$  33,3%  
 $\diamond$  33,3%  
 $\diamond$  33,3%



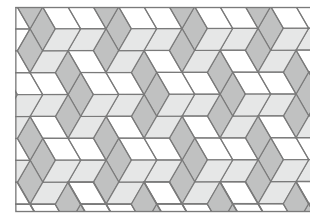
mod. 03  $\diamond$  25%  
 $\diamond$  25%  
 $\diamond$  50%



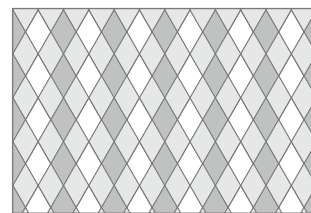
mod. 07  $\diamond$  16,6%  
 $\diamond$  41,7%  
 $\diamond$  41,7%



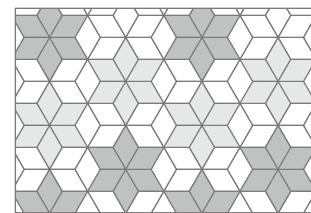
mod. 11  $\diamond$  33,3%  
 $\diamond$  33,3%  
 $\diamond$  33,3%



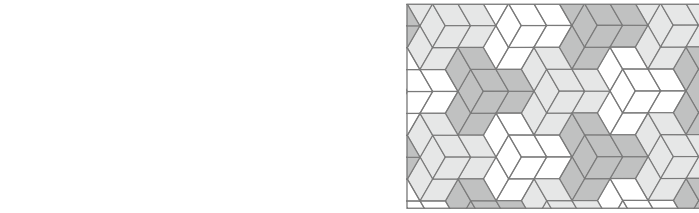
mod. 14  $\diamond$  33,3%  
 $\diamond$  33,3%  
 $\diamond$  33,3%



mod. 04  $\diamond$  33,3%  
 $\diamond$  33,3%  
 $\diamond$  33,3%



mod. 08  $\diamond$  50%  
 $\diamond$  25%  
 $\diamond$  25%



mod. 15  $\diamond$  33,3%  
 $\diamond$  33,3%  
 $\diamond$  33,3%



WALL ROMBO mod. 02 BOCOTE, MOGANO  
TOP MOGANO



mod. 01  
 $\diamond$  SLAVONIA  
100%



mod. 03  
 $\diamond$  SLAVONIA 33,3%  $\diamond$  BOCOTE 33,3%  $\diamond$  MOGANO 33,3%



mod. 04  
 $\diamond$  SLAVONIA 33,3%  $\diamond$  BOCOTE 33,3%  $\diamond$  COBOLO 33,3%

# LES BOIS

## ROMBO



mod. 05

● MOGANO  
100%



mod. 07

● BOCOTE 41,7% ● MOGANO 41,7% ● COBOLO 16,6%



mod. 11

● BOCOTE 33,3% ● MOGANO 33,3% ● COBOLO 33,3%



mod. 12

● SARAWA  
100%



mod. 15

● SARAWA 50% ● COBOLO 50%



mod. 13

● SLAVONIA 33,3% ● BOCOTE 33,3% ● COBOLO 33,3%



mod. 08

● SLAVONIA 50% ● BOCOTE 25% ● MOGANO 25%



mod. 09

● SLAVONIA 33,3% ● BOCOTE 33,3% ● MOGANO 33,3%



mod. 10

● SLAVONIA 33,3% ● BOCOTE 33,3% ● COBOLO 33,3%



mod. 12

● BOCOTE  
100%



mod. 15

● BOCOTE 33,3% ● MOGANO 33,3% ● COBOLO 33,3%

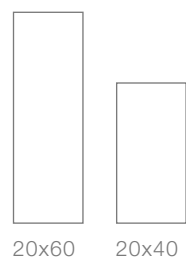


mod. 14

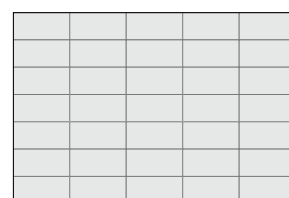
● SLAVONIA 33,3% ● BOCOTE 33,3% ● COBOLO 33,3%

# LES BOIS

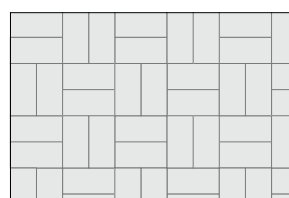
20x40 - 20x60



20x40

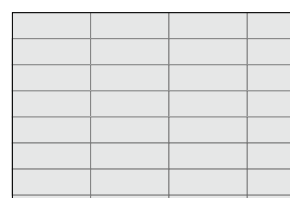


**mod. 16**  
20x40 100%



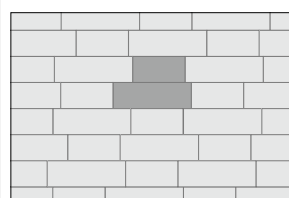
**mod. 20**  
20x40 100%

20x60

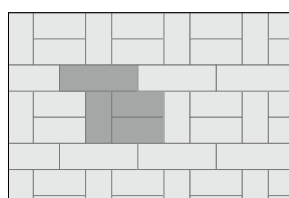


**mod. 23**  
20x60 100%

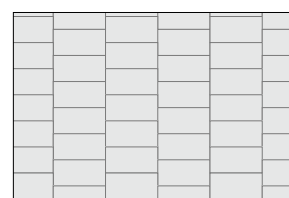
20x40 - 20x60



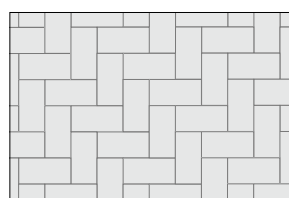
**mod. 28**  
20x40 40% 20x60 60%



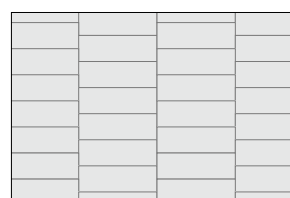
**mod. 33**  
20x40 66,6% 20x60 33,3%



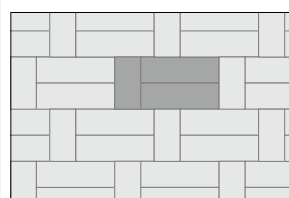
**mod. 17**  
20x40 100%



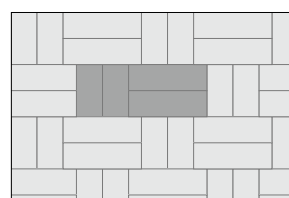
**mod. 21**  
20x40 100%



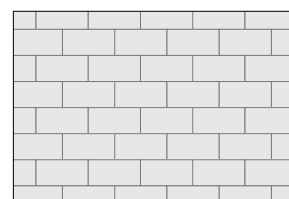
**mod. 24**  
20x60 100%



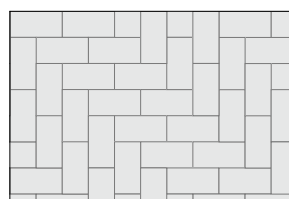
**mod. 29**  
20x40 25% 20x60 75%



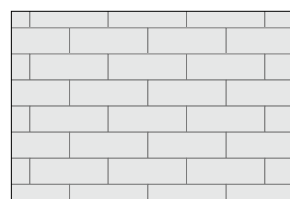
**mod. 34**  
20x40 40% 20x60 60%



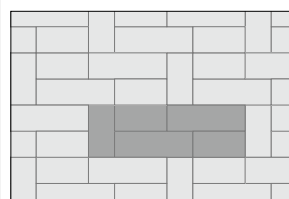
**mod. 18**  
20x40 100%



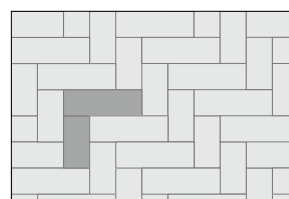
**mod. 22**  
20x40 100%



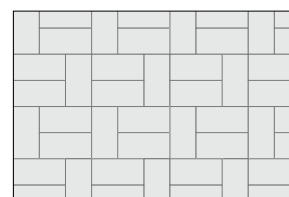
**mod. 25**  
20x60 100%



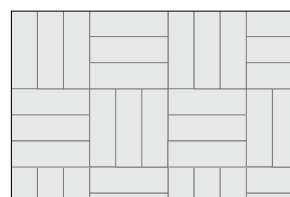
**mod. 30**  
20x40 50% 20x60 50%



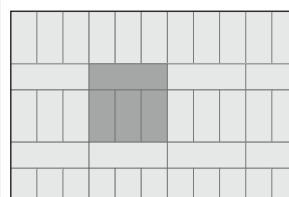
**mod. 35**  
20x40 40% 20x60 60%



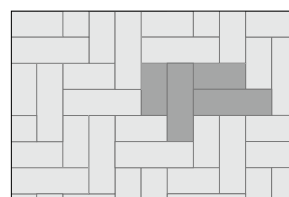
**mod. 19**  
20x40 100%



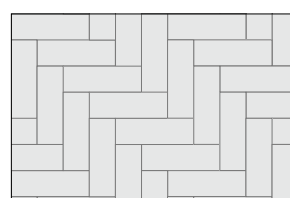
**mod. 26**  
20x60 100%



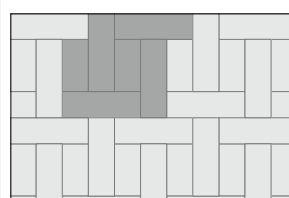
**mod. 31**  
20x40 33,3% 20x60 66,6%



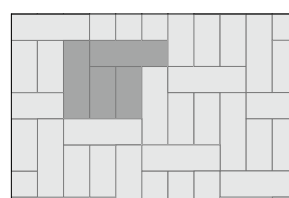
**mod. 36**  
20x40 40% 20x60 60%



**mod. 27**  
20x60 100%



**mod. 32**  
20x40 25% 20x60 75%



**mod. 37**  
20x40 40% 20x60 60%

Disponibile in tutti i colori  
Available in all colors:



COBOLO



MOGANO



BOCOTE



SLAVONIA



SARAWA



SHOWER FLOOR SARAWA 20x40  
FLOOR MAXI PRIMA MATERIA CEMENTO 120x120

20x40



**mod. 16**  
COBOLO  
100%



**mod. 17**  
BOCOTE  
100%



**mod. 18**  
SLAVONIA  
100%

# LES BOIS

20x40 - 20x60

20x60



mod. 23  
● COBOLO  
100%



mod. 25  
● SARAWA  
100%



mod. 26  
● SLAVONIA  
100%

20x40 - 20x60



mod. 28  
● COBOLO 20x40 40% ● COBOLO 20x60 60%



mod. 31  
● BOCOTE 20x40 33,3% ● BOCOTE 20x60 66,6%



mod. 29  
● BOCOTE 25% ● MOGANO 75%



mod. 24  
● BOCOTE  
100%



mod. 25  
● MOGANO  
100%



mod. 26  
● SLAVONIA 33,3% ● BOCOTE 66,6%



mod. 33  
● SLAVONIA 20x40 66,6% ● SLAVONIA 20x60 33,3%



mod. 37  
● SARAWA 20x40 40% ● SARAWA 20x60 60%



mod. 34  
● SLAVONIA 20x40 40% ● MOGANO 20x60 60%

# LES BOIS

## COBOLO



LB005 COBOLO rett  
80x180 - 31½"x70¾"



LB010 COBOLO rett  
26,5x180 - 10½"x70¾"



LB015 COBOLO rett  
20x180 - 7"x70¾"



LB020 COBOLO rett  
LB025 COBOLO grip  
20x120 - 7"x47½"



LB030 COBOLO rett  
LB075 COBOLO grip  
60x120 - 23½"x47½"



LB060 CHEVRON COBOLO rett  
9x58,5 - 3.5"x23"



LB114 COBOLO rett  
20x60 - 7"x23½"



LB119 COBOLO rett  
20x40 - 7"x15¾"



LB124 C. ROMBO rett  
22,5x39,5 - 8.8"x15.5"



LB055 OTTONE bacchetta rett  
1x0,8x120 - 0.4"x0.3"x47½"



LB100 CHEVRY COBOLO mos.  
30x30 - 11¾"x11¾"



LB101 CHEVRY MIX DARK mos.  
30x30 - 11¾"x11¾"



LB080 COBOLO batt.  
4,6x60 - 1.8"x23½"



LB095 COBOLO mos. rett  
15x120 - 6"x47½" / 2x120 - 0.8"x47½"



LB049 BAGUETTE 3D MO-COB. rett  
29x120 - 11¾"x47½"



LB051 BATONNET DARK 3D rett  
29x59 - 11¾"x23½"



LB065 LOUVRE COBOLO rett  
60x120 - 23½"x47½"



LB070 VILLANDRY COB. rett  
60x120 - 23½"x47½"



LB040 VERSAILLES COB. rett  
80x80 - 31½"x31½"

# LES BOIS

## MOGANO



LB004 MOGANO rett  
80x180 - 31½"x70¾"



LB009 MOGANO rett  
26,5x180 - 10½"x70¾"



LB014 MOGANO rett  
20x180 - 7"x70¾"



LB019 MOGANO rett  
LB024 MOGANO grip  
20x120 - 7"x47½"



LB029 MOGANO rett  
LB074 MOGANO grip  
60x120 - 23½"x47½"



LB059 CHEVRON MOGANO rett  
9x58,5 - 3.5"x23"



LB113 MOGANO rett  
20x60 - 7"x23½"



LB118 MOGANO rett  
20x40 - 7"x15¾"



LB123 M. ROMBO rett  
22,5x39,5 - 8.8"x15.5"



LB055 OTTONE bacchetta rett  
1x0,8x120 - 0.4"x0.3"x47½"



LB099 CHEVRY MOGANO mos.  
30x30 - 11¾"x11¾"



LB101 CHEVRY MIX DARK mos.  
30x30 - 11¾"x11¾"



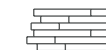
LB079 MOGANO batt.  
4,6x60 - 1.8"x23½"



LB094 MOGANO mos. rett  
15x120 - 6"x47½" / 2x120 - 0.8"x47½"



LB049 BAGUETTE 3D MO-COB. rett  
29x120 - 11¾"x47½"



LB051 BATONNET DARK 3D rett  
29x59 - 11¾"x23½"



LB064 LOUVRE MOGANO rett  
60x120 - 23½"x47½"



LB069 VILLANDRY MOGANO rett  
60x120 - 23½"x47½"



LB039 VERSAILLES MOGANO rett  
80x80 - 31½"x31½"

# LES BOIS

## BOCOTE



LB003 BOCOTE rett  
80x180 - 31½"x70¾"



LB008 BOCOTE rett  
26,5x180 - 10½"x70¾"



LB013 BOCOTE rett  
20x180 - 7¾"x70¾"



LB018 BOCOTE rett  
LB023 BOCOTE grip  
20x120 - 7¾"x47½"



LB028 BOCOTE rett  
LB073 BOCOTE grip  
60x120 - 23¾"x47½"



LB058 CHEVRON BOCOTE rett  
9x58,5 - 3.5"x23"



LB112 BOCOTE rett  
20x60 - 7¾"x23¾"



LB117 BOCOTE rett  
20x40 - 7¾"x15¾"



LB122 B. ROMBO rett  
22,5x39,5 - 8.8"x15.5"



LB055 OTTONE bacchetta rett  
1x0,8x120 - 0.4"x0.3"x47½"



LB098 CHEVRY BOCOTE mos.  
30x30 - 11¾"x11¾"



LB101 CHEVRY MIX DARK mos.  
30x30 - 11¾"x11¾"



LB078 BOCOTE batt.  
4,6x60 - 1.8"x23¾"



LB093 BOCOTE mos. rett  
15x120 - 6"x47½" / 2x120 - 0.8"x47½"



LB048 BAGUETTE 3D BOCOTE rett  
29x120 - 11¾"x47½"



LB051 BATONNET DARK 3D rett  
29x59 - 11¾"x23¾"



LB063 LOUVRE BOCOTE rett  
60x120 - 23¾"x47½"



LB068 VILLANDRY BOCOTE rett  
60x120 - 23¾"x47½"



LB038 VERSAILLES BOCOTE rett  
80x80 - 31½"x31½"

# LES BOIS

## SLAVONIA



LB001 SLAVONIA rett  
80x180 - 31½"x70¾"



LB006 SLAVONIA rett  
26,5x180 - 10½"x70¾"



LB011 SLAVONIA rett  
20x180 - 7¾"x70¾"



LB016 SLAVONIA rett  
LB021 SLAVONIA grip  
20x120 - 7¾"x47½"



LB026 SLAVONIA rett  
LB071 SLAVONIA grip  
60x120 - 23¾"x47½"



LB056 CHEVRON SLAVONIA rett  
9x58,5 - 3.5"x23"



LB110 SLAVONIA rett  
20x60 - 7¾"x23¾"



LB115 SLAVONIA rett  
20x40 - 7¾"x15¾"



LB120 S. ROMBO rett  
22,5x39,5 - 8.8"x15.5"



LB055 OTTONE bacchetta rett  
1x0,8x120 - 0.4"x0.3"x47½"



LB096 CHEVRY SLAVONIA mos.  
80x80 - 31½"x31½"



LB076 SLAVONIA batt.  
4,6x60 - 1.8"x23¾"



LB091 SLAVONIA mos. rett  
15x120 - 6"x47½" / 2x120 - 0.8"x47½"



LB046 BAGUETTE 3D SLAVONIA rett  
29x120 - 11¾"x47½"



LB051 BATONNET DARK 3D rett  
29x59 - 11¾"x23¾"



LB061 LOUVRE SLAVONIA rett  
60x120 - 23¾"x47½"



LB066 VILLANDRY SLAVONIA rett  
60x120 - 23¾"x47½"



LB036 VERSAILLES SLAVONIA rett  
80x80 - 31½"x31½"

# LES BOIS

## SARAWA



LB002 SARAWE rett  
80x180 - 31½"x70¾"



LB007 SARAWE rett  
26,5x180 - 10½"x70¾"



LB012 SARAWE rett  
20x180 - 7"x70¾"



LB017 SARAWE rett  
LB022 SARAWE grip  
20x120 - 7"x47½"



LB027 SARAWE rett  
LB072 SARAWE grip  
60x120 - 23"x47½"



LB057 CHEVRON SARAWE rett  
9x58,5 - 3.5"x23"



LB111 SARAWE rett  
20x60 - 7"x23½"



LB116 SARAWE rett  
20x40 - 7"x15¾"



LB121 S. ROMBO rett  
22,5x39,5 - 8.8"x15.5"



LB055 OTTONE bacchetta rett  
1x0,8x120 - 0.4"x0.3"x47½"



LB097 CHEVRY SARAWE mos.  
30x30 - 11¾"x11¾"



LB077 SARAWE batt.  
4,6x60 - 1.8"x23½"



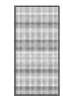
LB092 SARAWE mos. rett  
15x120 - 6"x47½" / 2x120 - 0.8"x47½"



LB047 BAGUETTE 3D SARAWE rett  
29x120 - 11¾"x47½"



LB051 BATONNET DARK 3D rett  
29x59 - 11¾"x23½"



LB062 LOUVRE SARAWE rett  
60x120 - 23"x47½"



LB067 VILLANDRY SARAWE rett  
60x120 - 23"x47½"



LB037 VERSAILLES SARAWE rett  
80x80 - 31½"x31½"

# LES BOIS

## 2 CM



8048 SLAVONIA 2.0 rett  
80x180 - 31½"x70¾"



8058 SLAVONIA 2.0 rett  
26,5x180 - 10½"x70¾"



LB126 SLAVONIA 2.0 rett  
20x120 - 7"x47½"



LB081 SLAVONIA 2.0 rett  
40x120 - 15¾"x47½"



LB086 SL. CHEVRY 2.0 rett  
40x120 - 15¾"x47½"



8049 SARAWE 2.0 rett  
80x180 - 31½"x70¾"



8056 SARAWE 2.0 rett  
26,5x180 - 10½"x70¾"



LB127 SARAWE 2.0 rett  
20x120 - 7"x47½"



LB082 SARAWE 2.0 rett  
40x120 - 15¾"x47½"



LB087 SA. CHEVRY 2.0 rett  
40x120 - 15¾"x47½"



LB128 BOCOTE 2.0 rett  
20x120 - 7"x47½"



LB083 BOCOTE 2.0 rett  
40x120 - 15¾"x47½"



LB129 MOGANO 2.0 rett  
20x120 - 7"x47½"



LB084 MOGANO 2.0 rett  
40x120 - 15¾"x47½"



LB130 COBOLO 2.0 rett  
20x120 - 7"x47½"



LB085 COBOLO 2.0 rett  
40x120 - 15¾"x47½"



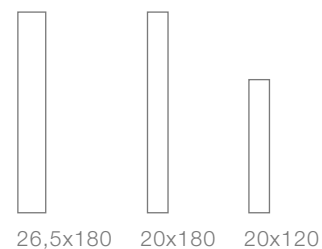
LB088 MIX DARK CHEVRY 2.0 rett  
40x120 - 15¾"x47½"



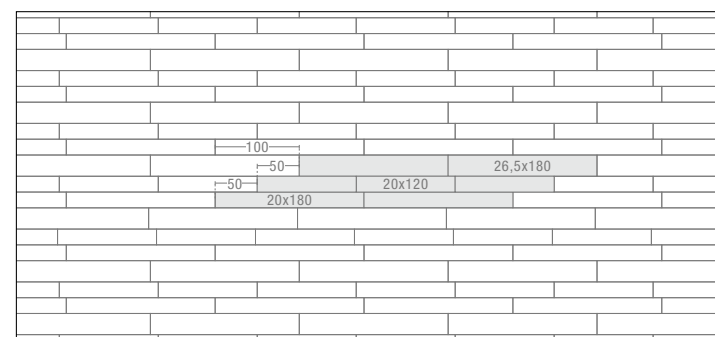
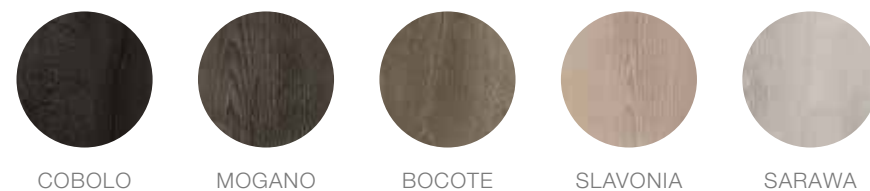


# LES BOIS

26,5x180 - 20x180 - 20x120

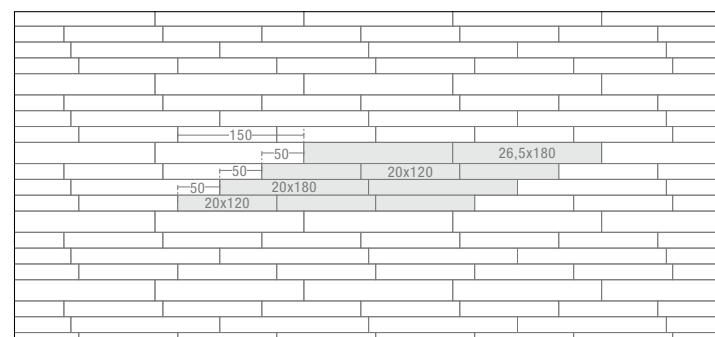


Disponibile in tutti i colori  
Available in all colors:



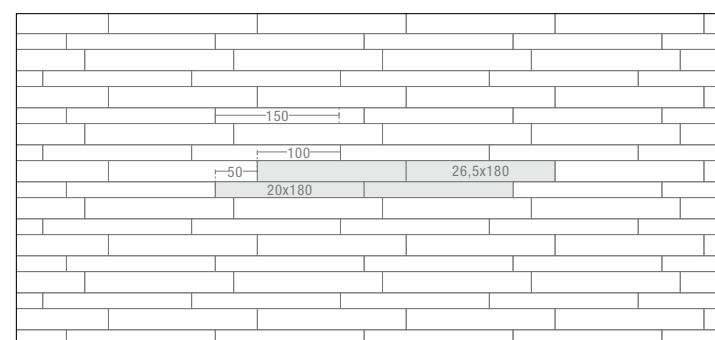
**mod. I**

- Nr. 2 26,5x180 39,8%
- Nr. 2 20x180 30,1%
- Nr. 3 20x120 30,1%



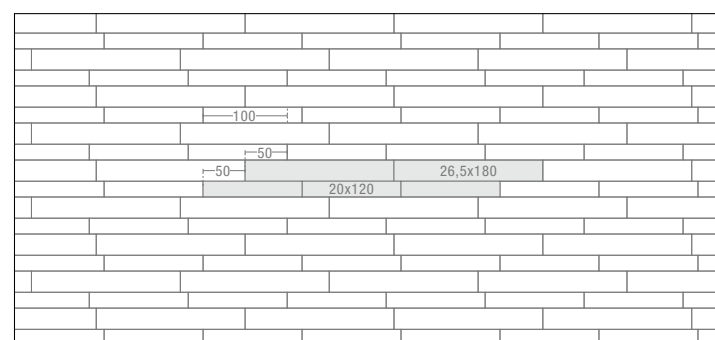
**mod. L**

- Nr. 2 26,5x180 30,6%
- Nr. 2 20x180 23,2%
- Nr. 6 20x120 46,2%



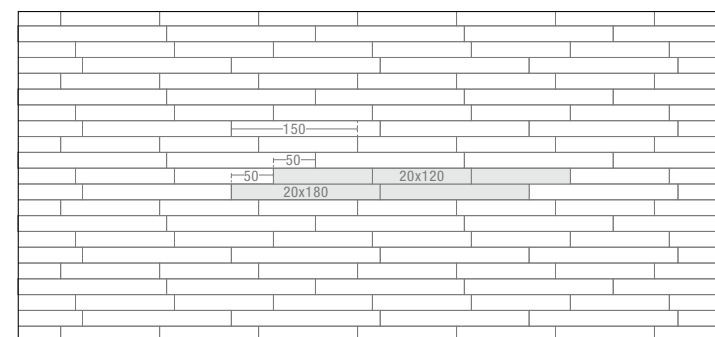
**mod. M**

- Nr. 2 26,5x180 57%
- Nr. 2 20x180 43%



**mod. N**

- Nr. 2 26,5x180 57%
- Nr. 3 20x120 43%



**mod. O**

- Nr. 2 20x180 50%
- Nr. 3 20x120 50%

# LES BOIS

## STUCCHI

## PLASTERS

COBOLO  
MOGANO

MAPEI 120

BOCOTE

MAPEI 114


SLAVONIA  
SARAWA

MAPEI 113

## INFORMAZIONI TECNICHE

## TECNICAL DATA

LES BOIS	Thickness	Pezzi per scatola	M <sup>2</sup> per scatola	Kg per scatola	Scatole per pallet	M <sup>2</sup> per pallet	KG per pallet
80x180	10 mm	2	2,88	67,00	20	57,60	1.360
26,5x180	10 mm	3	1,44	33,00	42	60,48	1.481,60
20x180	10 mm	4	1,44	33,00	40	57,60	1.404
20x120	10 mm	6	1,44	31,90	24	34,56	785,60
60x120	10 mm	2	1,44	33,50	30	43,20	1.025
CHEVRON 9x58,5	10 mm	14	0,63	14,50	48	30,24	716
ROMBO	10 mm	24	0,96	22,00	33	31,68	746
20x60	10 mm	8	0,96	22,00	48	46,08	1.076
20x40	10 mm	12	0,96	22,00	48	46,08	1.076
VERSAILLES 80x80	10 mm	2	1,28	30,00	40	51,20	1.220
BAGUETTE 3D 29x120	-	2	0,70	16,00	20	14,00	340
BATONNET 3D	-	4	0,70	17,00	24	16,80	428
LOUVRE 60x120	10 mm	2	1,44	33,50	-	-	-
VILLANDRY 60x120	10 mm	2	1,44	33,50	-	-	-
MOSAICO 15x120	10 mm	6	1,08	23,00	30	32,40	710
CHEVRY 30x30	10 mm	10	0,90	20,00	48	43,20	980
80x180	20 mm	1	1,44	67,00	20	28,80	1.360
26,5x180	20 mm	2	0,96	44,00	30	28,80	1.340
20x120	20 mm	3	0,72	32,00	24	17,28	788
40x120	20 mm	2	0,96	44,20	24	23,04	1.080,8
40x120 chevy	20 mm	2	0,96	44,20	24	23,04	1.080,8

CARATTERISTICHE E PROPRIETÀ CHARACTERISTICS OR PROPERTIES CARACTÉRISTIQUES OU PROPRIÉTÉS EIGENSCHAFTEN UND GÜTEMERKMALE	NORME STANDARDS NORMES NORMEN	SECONDO LE NORME COMPLIANCE WITH STANDARDS CONFORME AUX NORMES ENTSPRECHEND DEN NORMEN UNI EN 14411 G					
<b>QUALITÀ DELLA SUPERFICIE</b> - SURFACE QUALITY - QUALITÉ DE LA SURFACE - OBERFLÄCHENQUALITÄT	ISO <b>10545-2</b>	<b>IL 95% MIN DELLE PISTRELLE DEVE ESSERE ESENTA DA DIFETTI VISIBILI</b> / AT LEAST 95% OF THE TILES MUST BE FREE FROM VISIBLE FLAWS / 95% MIN DES CARREUX NE DOIVENT PRÉSENTER AUCUN DÉFAUT VISIBLE / MINDESTENS 95% DER FLIESEN MÜSSEN FREI VON SICHTBAREN	CONFORME ALLE NORME - COMPLIES WITH STANDARD - CONFORME AUX NORMES - NORMGERECHT				
			N ≥ 15cm %	N ≥ 15cm mm	RISULTATI TEST TEST RESULTS RESULTÉS DES ESSAIS PRÜFERGEBNIS	CONFORME ALLE NORME COMPLIES WITH STANDARD CONFORME AUX NORMES - NORMGERECHT	
			± 0,5 %	± 1,5 mm	± 0,10%	CONFORME ALLE NORME COMPLIES WITH STANDARD CONFORME AUX NORMES - NORMGERECHT	
			± 0,5 %	± 0,5 mm	± 5%	CONFORME ALLE NORME COMPLIES WITH STANDARD CONFORME AUX NORMES NORMGERECHT	
			± 0,5 %	± 2,0 mm	± 0,20%	CONFORME ALLE NORME COMPLIES WITH STANDARD CONFORME AUX NORMES - NORMGERECHT	
<b>DEVIAZIONE MASSIMA DI RETTILINEITÀ IN %</b> - MAXIMUM STRAIGHTNESS DEVIATION IN % - MARGE DE TOLÉRANCE DE RECTITUDE EN % - ZULAESSIGE HOECHSTABWEICHUNG DER KANTENGERADHEIT IN PROZENTEN			± 0,5 %	± 2,0 mm	± 0,35%	CONFORME ALLE NORME COMPLIES WITH STANDARD CONFORME AUX NORMES - NORMGERECHT	
<b>DEVIAZIONE AMMISSIBILE IN %, DELLO SPESSORE MEDIO DI OGNI PIASTRELLA DALLA DIMENSIONE DI FABBRICAZIONE</b> - ADMITTED DEVIATION, IN %, OF THE AVERAGE THICKNESS OF EACH TILE FROM THE PRODUCTION DIMENSIONS - MARGE DE TOLÉRANCE, EN POURCENTAGE, ENTRE L'ÉPAISSEUR MOYENNE DE CHAQUE CARREAU ET LA DIMENSION DE FABRICATION - ZULÄSSIGE ABWEICHUNG DER DURCHSCHNITTSDICKE JEDER FLIESE VOM HERSTELLMASS IN PROZENTEN			± 0,5 %	± 0,5 mm	± 5%	CONFORME ALLE NORME COMPLIES WITH STANDARD CONFORME AUX NORMES NORMGERECHT	
<b>DEVIAZIONE MASSIMA DI ORTOGONALITÀ IN %</b> - MAXIMUM RIGHT-ANGLE DEVIATION IN % - MARGE DE TOLÉRANCE D'ANGULARITÉ IN % - HOECHSTABWEICHUNG DER RECHTWINKLIGKEIT IN PROZENTEN			± 0,5 %	± 2,0 mm	± 0,20%	CONFORME ALLE NORME COMPLIES WITH STANDARD CONFORME AUX NORMES - NORMGERECHT	
<b>PLANARITÀ</b> - FLATNESS - PLANÉITÉ - EBENFLÄCHIGKEIT			± 0,5 %	± 2,0 mm	± 0,35%	CONFORME ALLE NORME COMPLIES WITH STANDARD CONFORME AUX NORMES - NORMGERECHT	
<b>LUNGHEZZA E LARGHEZZA</b> - LENGTH AND WIDTH LONGUEUR ET LARGEUR - LÄNGE UND BREITE			± 0,6 %	± 2,0 mm	± 0,15%	CONFORME ALLE NORME COMPLIES WITH STANDARD CONFORME AUX NORMES - NORMGERECHT	
<b>ASSORBIMENTO D'ACQUA</b> - WATER ABSORPTION ABSORPTION D'EAU - WASSERAUFNAHME	ISO <b>10545-3</b>	≤ 0,5 %	E ≤ 0,04 %				
<b>RESISTENZA ALLA FLESSIONE</b> - BENDING STRENGTH RÉSISTANCE À LA FLEXION - BIEGEZUGFESTIGKEIT	ISO <b>10545-4</b>	R ≥ 35 N/mm²	53 N/mm²				
<b>RESISTENZA ALL'URTO</b> - IMPACT RESISTANCE RÉSISTANCE AUX CHOCs - SCHLAGFESTIGKEIT	ISO <b>10545-5</b>	VALORE DICHIARATO - DECLARED VALUE - VALEUR DÉCLARÉE - ANGEGBENER WERT	0,88				
<b>RESISTENZA ALL'ABRASIONE PROFONDA</b> - RESISTANCE TO DEEP ABRASION RÉSISTANCE À L'ABRASION PROFONDE - WINDERSTÄNDSFAKKGKEIT GEGEN TIEFENABRIEB	ISO <b>10545-6</b>	≤175 mm³	<128 mm³				
<b>COEFF. DI DILATAZIONE TERMICA LINEARE</b> - COEFFICIENT OF LINEAR THERMAL-EXPANSION - COEFF. D'EXTENSION THERMIQUE LINEAIRE - LINEAR WÄRMEAUSDEHNUNGS-KOEFFIZIENT	ISO <b>10545-8</b>	-	α=7x10 <sup>-6</sup> /°C <sup>-1</sup>				
<b>RESISTENZA AGLI SBALZI TERMICI</b> - THERMAL SHOCK RESISTANCE RÉSISTANCE AUX ÉCARTS THERMIQUES - TEMPERATURWECHSELBESTÄNDIGKEIT	ISO <b>10545-9</b>	TEST SUPERATO SECONDO EN ISO 10545-1 - PASS ACCORDING EN ISO 10545-1 - TEST OBTENUS SELON EN ISO 10545-1 - TEST LAUT EN ISO 10545-1 BESTANDEN	NESSUN DANNO - NO DAMAGE - AUCUN DOMMAGE - KEIN SCHADEN				
<b>RESISTENZA AL GELO</b> - FROST RESISTANCE RÉSISTANCE AU GEL - FROSTBESTÄNDIGKEIT	ISO <b>10545-12</b>	TEST SUPERATO SECONDO EN ISO 10545-1 - PASS ACCORDING EN ISO 10545-1 - TEST OBTENUS SELON EN ISO 10545-1 - TEST LAUT EN ISO 10545-1 BESTANDEN	NESSUN DANNO - NO DAMAGE - AUCUN DOMMAGE - KEIN SCHADEN				
<b>RESISTENZA AGLI AGENTI CHIMICI</b> - CHEMICAL RESISTANCE RÉSISTANCE À L'ATTAQUE CHIMIQUE - BASTÄNDIGKEIT GEGEN CHEMIKALIEN	ISO <b>10545-13</b>	UB MIN.	UA ULA UHA				
<b>RESISTENZA ALLE MACCHIE</b> - RESISTANCE TO STAIN RÉSISTANCE AUX TACHES - FLECKENFESTIGKEIT	ISO <b>10545-14</b>	VALORE DICHIARATO - DECLARED VALUE VALEUR DÉCLARÉE - ANGEGBENER WERT	Classe 5				
<b>RESISTENZA AL FUOCO</b> - FIRE RESISTANCE RÉSISTANCE AU FEU - FEUERWIDERSTAND	EN <b>13501 - 1</b>	VALORE DICHIARATO - DECLARED VALUE VALEUR DÉCLARÉE - ANGEGBENER WERT	CLASSE A1 - A1 FL				
<b>RESISTENZA ALLO SCIVOLAMENTO</b> - SLIP RESISTANCE RÉSISTANCE AU GLISSEMENT - BESTIMMUNG DER RUSTCHEMMENDE EIGENSCHAFT	B.C.R. C.A. B.C.R. G.B D. M. 236 DEL 4.6 1989	> 0,40	NAT	GRIP	<b>SKE2.0</b>		
			CONF	CONF	CONF		
			ASTM C 1028/07 BOT 3000	Dry SCOF > 0,60	CONF	CONF	CONF
			ASTM C 1028/07 BOT 3000	Wet SCOF > 0,60	CONF	CONF	CONF
			ANSI A137.1 BOT 3000	Wet DCOF > 0,42	CONF	CONF	CONF
			DIN 51130	-	R10	R11	R11
			DIN 51097	-	A	A+B+C	A+B+C
			ENV 12633	≥ CL 1	CONF	CONF	CONF
			UNI EN 13036 - 4 2011	≥ 36	CONF	CONF	CONF
<b>STABILITÀ DEI COLORI ALLA LUCE E AI RAGGI U.V.</b> COLOUR STABILITY ON EXPOSURE TO LIGHT AND UV RAYS STABILITÉ DES COULEURS À LA LUMIÈRE ET AUX RAYONS U.V. FARBECHTHEIT UNTER LICHTEINLUSS UND UV-STRAHLUNG	DIN 51094	VALORE DICHIARATO - DECLARED VALUE - VALEUR DÉCLARÉE - ANGEGBENER WERT	CONFORME ALLE NORME, NO VARIAZIONI COMPLIES WITH STANDARD, NO VARIATION CONFORME AUX NORMES, PAS DE CHANGEMENTS NORMGERECHT, KEINE AENDERUNG				
<b>SKE2.0</b>							
<b>CARICO STATICO</b> - STATIC LOAD CHARGE STATIQUE - STATISCHER BELASTUNG	EN 12825	VALORE DICHIARATO - DECLARED VALUE - VALEUR DÉCLARÉE - ANGEGBENER WERT	CENTRO - CENTRE 9,6 KN CENTRO LATO CENTRE POINT OF SIDES 6,5 KN DIAGONALE - DIAGONAL 8,19 KN (CLASSE 3)				
<b>CARICO DINAMICO, PROVA DI URTO DI CORPI DURI</b> - DYMANIC LAOD CAPACITY, HAND OBJECT IMPACT TEST C. STATIQUE, ESSAI DE CHOC DE CORPS DURS - STATISCHER BELASTUNG, AUSWIRKUNGEN TEST DER HARTEN KÖRPER	EN 12825	VALORE DICHIARATO - DECLARED VALUE - VALEUR DÉCLARÉE - ANGEGBENER WERT	TEST NON SUPERATO - TEST NOT PASSED TEST A ÉCHOUÉ - TEST FEHLGESCHLAGEN				
<b>CARICO DINAMICO, PROVA DI URTO DI CORPI MORBIDI</b> - DYMANIC LAOD CAPACITY, SOFT OBJECT IMPACT TEST C. STATIQUE, ESSAIS D'IMPACT DE CORPS MOUS - STATISCHER BELASTUNG, AUSWIRKUNGEN PRÜFUNG VON WEICHEN KÖRPERN	EN 12825	VALORE DICHIARATO - DECLARED VALUE - VALEUR DÉCLARÉE - ANGEGBENER WERT	TEST SUPERATO - TEST PASSED TEST RÉUSSI - TEST BESTANDEN				
<b>RESISTENZA ALLA FLESSIONE, CARICO DI ROTTURA IN N</b> - BENDIND STRENGTH, BREAKING FORCE IN N RESISTANCE À LA LFEIXION, CHARGE DE ROPTURE IN N - BIEGEFESTIGKEIT, BRUCHLAST EN N	EN 1339	Kn 14,38	CLASSE U14				
<b>CARICO DI ROTTURA IN MPA</b> - BREAKING FORCE IN MPA - CHARGE DE ROPTURE IN MPA - BRUCHLAST EN MPA		-	MPA 46,5				



**Kronos 2 ceramiche S.p.A.**

Sede legale: Strada delle Fornaci, 20 41126 Modena Italy  
Sede amministrativa: Via Giardini, 62 41042 Fiorano Modenese (Mo) Italy  
tel. +39 0536 927711 - info@kronosceramiche.com  
www.kronosceramiche.com

