

 Inkiostro **Bianco**<sup>®</sup>  
CREATIVE THINKING

Inkiostro Bianco è un'azienda specializzata nella produzione di superfici continue e decorativi artistici e personalizzabili.

Un marchio, un progetto ambizioso, un laboratorio di idee applicate alla progettualità e alla produzione di grafiche decorative che ha come obiettivo la reinterpretazione del rivestimento interno per ogni superficie. Nell'offerta di Inkiostro Bianco il mondo dell'arte pittorica e della grafica digitale convergono in creazioni originali dalla forte personalità. Il risultato sono tele emozionali che trasformano le superfici in complementi di design d'avanguardia.

La produzione è interna in tutta le sue fasi: dalla realizzazione delle grafiche, ideate da un network di designers e artisti, alla stampa delle carte con avanzate tecnologie digitali. Tutti progetti caratterizzati da una forte possibilità di personalizzazione.



Inkiostro Bianco is a company specialised in the production of continuous and decorative artistic and customisable surfaces.

It is a brand, an ambitious project and a workshop of ideas applied to the design and production of decorative graphics, whose goal is to reinterpret the interior wall coverings for all surfaces. Pictorial art and digital graphics converge in the Inkiostro Bianco range to form original creations with a strong personality. This results in exciting canvases that transform surfaces into avant-garde design accessories.

All phases of production are carried out internally: from the creation of graphics, conceived by a network of designers and artists, to the printing of paper using advanced digital technologies.

All the projects are characterized by their ability to be customized.





exotic



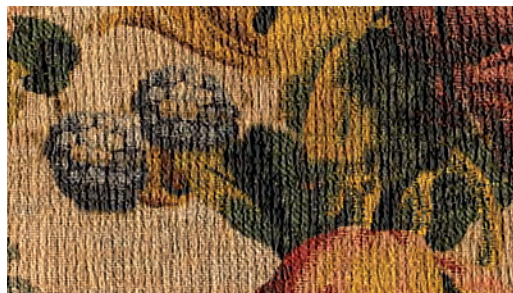
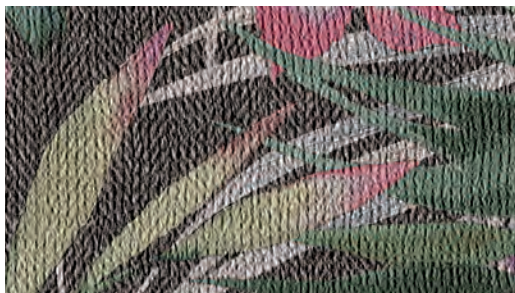
elegant



orient



concrete



La collezione "Undressing Surfaces" è stata studiata per decorativi su superfici multiple (parete, pavimento, soffitto). Ogni declinazione grafica propone la sovrapposizione di elementi che consentono di vestire l'ambiente con creatività. Questa filosofia permette l'utilizzo della collezione su grandi superfici, combinando le grafiche a seconda del progetto.

Con la collezione "Undressing Surfaces" nasce la prima Collezione Contract di Inkiostro Bianco.

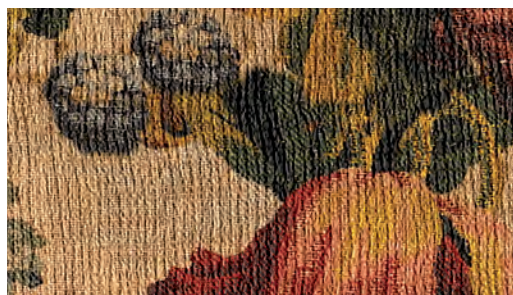
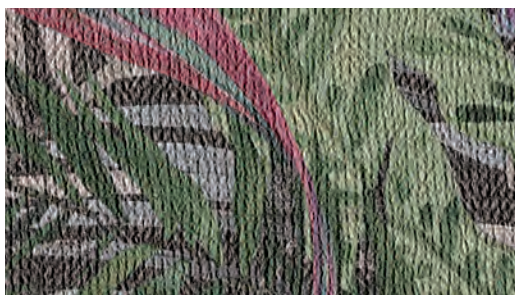
### Superfici da svestire

La superficie si sveste e si riveste con la nuova collezione "Undressing Surfaces" realizzata dal laboratorio grafico di Inkiostro Bianco.

I decori si sfogliano fino a spogliare la parete e si sovrappongono nella creazione di un nuovo stile. Pattern e texture si alternano, la possibilità di scelta si amplia grazie alle declinazioni realizzate per ogni grafica: due varianti colore e tre diversi livelli di decoro che permettono un'ulteriore customizzazione. L'ambiente si trasforma, cambia dimensione a seconda del grado di decorazione, il mood muta in base a tendenze e atmosfere, l'ispirazione viene da un processo di ricerca continuo, di contaminazione tra ambienti, stili e pensieri.

### Sotto il decoro, la superficie

Il decoro come filosofia, come elemento predominante che caratterizza l'ambiente conferendogli nuova veste. Strumento di espressione di stile e di definizione della materia. Tolto il decoro la superficie rimane nuda, uno spazio spoglio in attesa di identità.





“Undressing Surfaces” Collection has been created for decorations on multiple surfaces (walls, floor and ceiling). Any graphic variance features different elements overlapping and combination thus allowing to creatively “dress” the spaces up. This philosophy breaks into large dimensions surfaces enabling to combine and customize the graphics depending on the project.

“Undressing Surfaces” introduces the first Contract Collection by Inkiostro Bianco.

## Undressing Surfaces

The surface is undressed and redressed with the new collection “Undressing Surfaces”, created by the graphics workshop at Inkiostro Bianco.

The decorations are peeled away to undress the wall and overlapped to create a new style. With alternating patterns and textures, the range of choices is further widened by options created for each graphic: two colour variations and three different levels of decoration that allow additional customization. The space is transformed and changes size depending on the degree of decoration. The mood is altered according to trends and atmospheres, and inspiration is drawn from a process of continuous research, contamination between environments, styles and thoughts.

## The surface beneath the decoration

Decoration as a philosophy, as the dominant feature that characterizes the space, giving it a new look. A tool for expression, style and defining materials. When the decoration is removed, the surface is left bare - a bare space awaiting its identity.



# nest

---

Artist / Designer: **Ink Lab**

Collection: **Undressing surfaces**

Linea / Line: **Exotic**



INKNUEX1501\_A



INKNUEX1501\_B



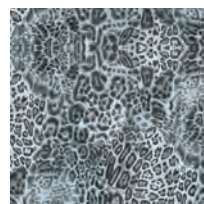
INKNUEX1501\_C



INKNUEX1502\_A



INKNUEX1502\_B



INKNUEX1502\_C





# dianthus

Artist / Designer: **Ink Lab**

Collection: **Undressing surfaces**

Linea / Line: **Exotic**



INKFXTF1501\_A



INKFXTF1501\_B



INKFXTF1501\_C



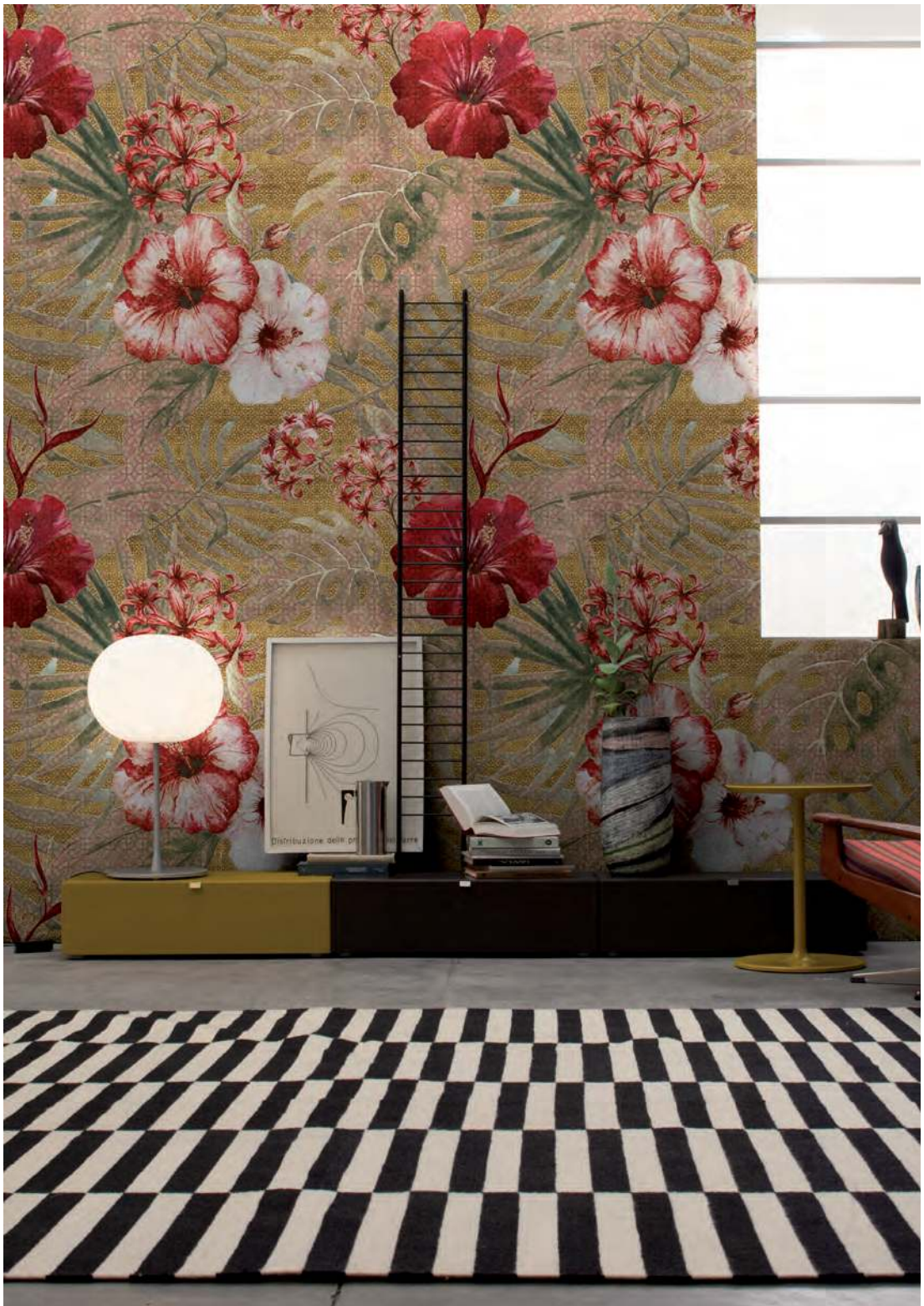
INKFXTF1502\_A



INKFXTF1502\_B



INKFXTF1502\_C



# van-gi

---

Artist / Designer: **Ink Lab**

Collection: **Undressing surfaces**

Linea / Line: **Exotic**



INKDGPF1501\_A



INKDGPF1501\_B



INKDGPF1501\_C



INKDGPF1502\_A



INKDGPF1502\_B



INKDGPF1502\_C



# tenno

---

Artist / Designer: **Ink Lab**

Collection: **Undressing surfaces**

Linea / Line: **Exotic**



INKEUGM1501\_A



INKEUGM1501\_B



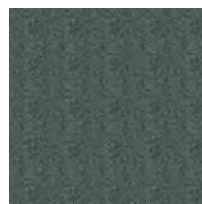
INKEUGM1501\_C



INKEUGM1502\_A



INKEUGM1502\_B



INKEUGM1502\_C



# flamenco

Artist / Designer: **Ink Lab**

Collection: **Undressing surfaces**

Linea / Line: **Exotic**



INKQHTJ1501\_A



INKQHTJ1501\_B



INKQHTJ1501\_C



INKQHTJ1502\_A



INKQHTJ1502\_B



INKQHTJ1502\_C





# màndala

---

Artist / Designer: **Ink Lab**

Collection: **Undressing surfaces**

Linea / Line: **Elegant**



INKINKN1501\_A



INKINKN1501\_B



INKINKN1501\_C



INKINKN1502\_A



INKINKN1502\_B



INKINKN1502\_C



# dumalis

Artist / Designer: **Ink Lab**

Collection: **Undressing surfaces**

Linea / Line: **Elegant**



INKEEIN1501\_A



INKEEIN1501\_B



INKEEIN1501\_C



INKEEIN1502\_A



INKEEIN1502\_B



INKEEIN1502\_C



# prunus

---

Artist / Designer: **Ink Lab**

Collection: **Undressing surfaces**

Linea / Line: **Elegant**



INKJDDU1501\_A



INKJDDU1501\_B



INKJDDU1501\_C



INKJDDU1502\_A



INKJDDU1502\_B



INKJDDU1502\_C



# rousseau

Artist / Designer: **Ink Lab**

Collection: **Undressing surfaces**

Linea / Line: **Elegant**



INKDEJE1501\_A



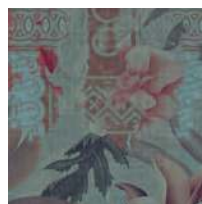
INKDEJE1501\_B



INKDEJE1501\_C



INKDEJE1502\_A



INKDEJE1502\_B



INKDEJE1502\_C





# ishtar

---

Artist / Designer: **Ink Lab**

Collection: **Undressing surfaces**

Linea / Line: **Elegant**



INKRBDI1501\_A



INKRBDI1501\_B



INKRBDI1501\_C



INKRBDI1502\_A



INKRBDI1502\_B



INKRBDI1502\_C



# ardeida

---

Artist / Designer: **Ink Lab**

Collection: **Undressing surfaces**

Linea / Line: **Orient**



INKQXSM1501\_A



INKQXSM1501\_B



INKQXSM1501\_C



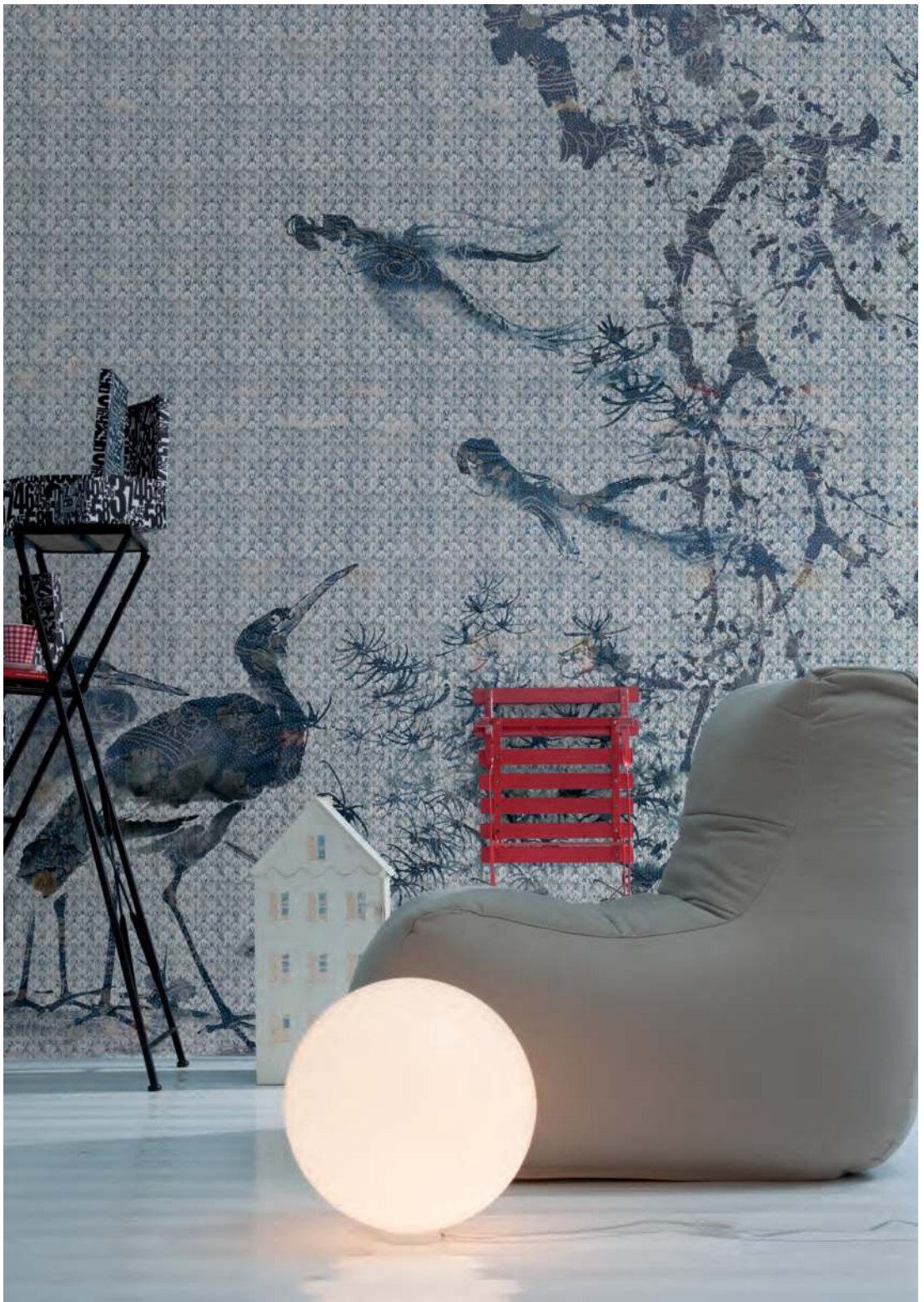
INKQXSM1502\_A



INKQXSM1502\_B



INKQXSM1502\_C



# sakura

---

Artist / Designer: **Ink Lab**

Collection: **Undressing surfaces**

Linea / Line: **Orient**



INKBNLN1501\_A



INKBNLN1501\_B



INKBNLN1501\_C



INKBNLN1502\_A



INKBNLN1502\_B



INKBNLN1502\_C



# hanami

---

Artist / Designer: **Ink Lab**

Collection: **Undressing surfaces**

Linea / Line: **Orient**



INKAJDC1501\_A



INKAJDC1501\_B



INKAJDC1501\_C



INKAJDC1502\_A



INKAJDC1502\_B



INKAJDC1502\_C





# radix

---

Artist / Designer: **Ink Lab**

Collection: **Undressing surfaces**

Linea / Line: **Orient**



INKIDUN1501\_A



INKIDUN1501\_B



INKIDUN1501\_C



INKIDUN1502\_A



INKIDUN1502\_B



INKIDUN1502\_C



# flora

---

Artist / Designer: **Ink Lab**

Collection: **Undressing surfaces**

Linea / Line: **Orient**



INKGIEN1501\_A



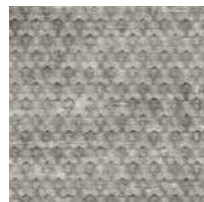
INKGIEN1501\_B



INKGIEN1501\_C



INKGIEN1502\_A



INKGIEN1502\_B



INKGIEN1502\_C



# e2r2

---

Artist / Designer:

**Ink Lab / Giocoadue**

Collection: **Undressing surfaces**

Linea / Line: **Concrete**



INKUUPN1501\_A



INKUUPN1501\_B



INKUUPN1501\_C



INKUUPN1502\_A



INKUUPN1502\_B



INKUUPN1502\_C



# portland

---

Artist / Designer:

**Ink Lab / Giocoadue**

Collection: **Undressing surfaces**

Linea / Line: **Concrete**



INKIDEK1501\_A



INKIDEK1501\_B



INKIDEK1501\_C



INKIDEK1502\_A



INKIDEK1502\_B



INKIDEK1502\_C





# concreto

---

Artist / Designer:

**Ink Lab / Giocoadue**

Collection: **Undressing surfaces**

Linea / Line: **Concrete**



INKUFFF1501\_A



INKUFFF1501\_B



INKUFFF1501\_C



INKUFFF1502\_A



INKUFFF1502\_B



INKUFFF1502\_C



# boise

Artist / Designer:

**Ink Lab / Giocoadue**

Collection: **Undressing surfaces**

Linea / Line: **Concrete**



INKHDZA1501\_A



INKHDZA1501\_B



INKHDZA1501\_C



INKHDZA1502\_A



INKHDZA1502\_B



INKHDZA1502\_C



# fenz

---

Artist / Designer:

**Ink Lab / Gioco adue**

Collection: **Undressing surfaces**

Linea / Line: **Concrete**



INKDOED1501\_A



INKDOED1501\_B



INKDOED1501\_C



INKDOED1502\_A



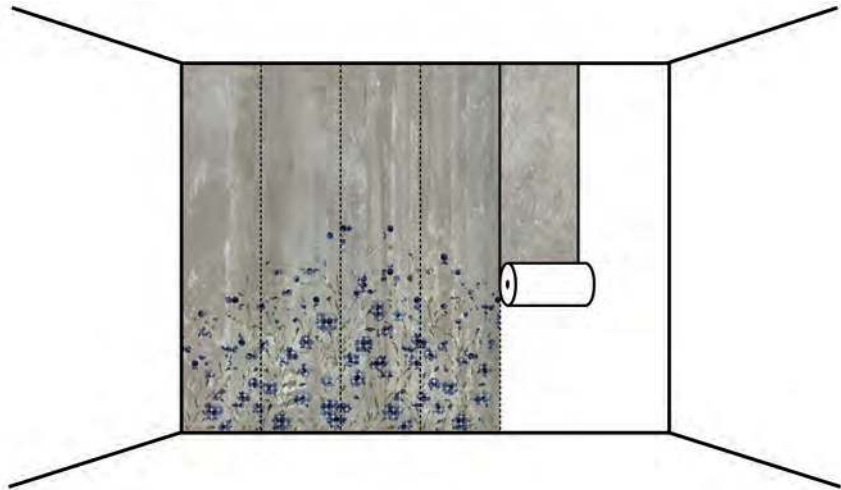
INKDOED1502\_B



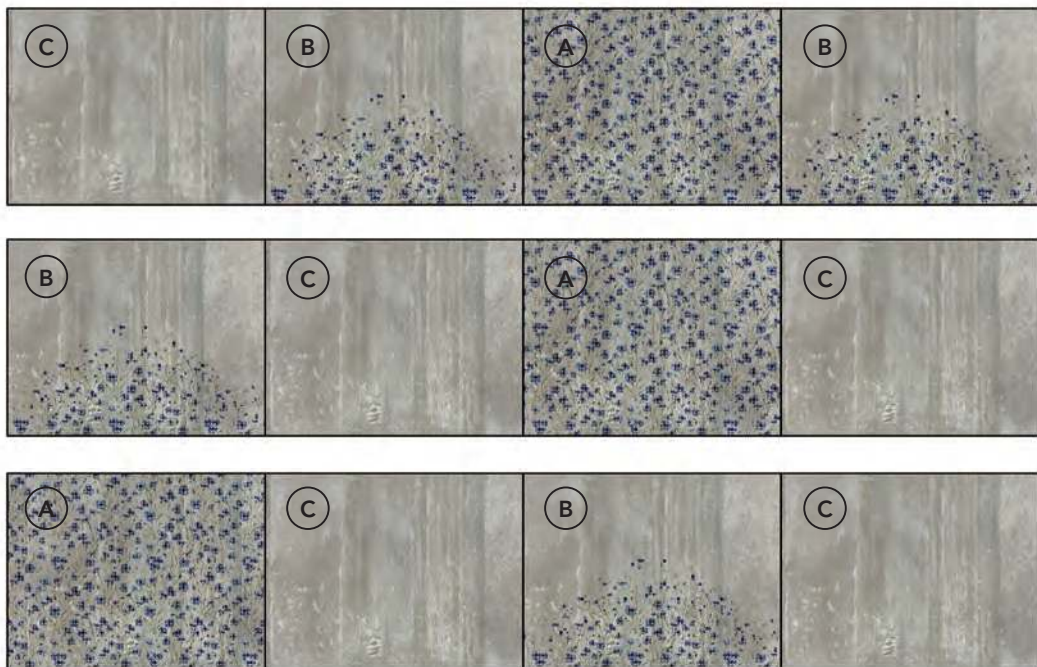
INKDOED1502\_C



Metodo di posa: a rotoli / Composition's system: rolls



Esempi di composizione delle grafiche / Graphics combination ideas



### Note generali

Tra la riproduzione cartacea sul catalogo e i nostri prodotti possono esserci differenze cromatiche, per la natura stessa dei due sistemi di stampa. Per tal motivo i colori riprodotti nel catalogo sono da ritenersi indicativi.

### General notes

There may be slight colour differences between the print reproduction in the catalogue and that of our products, due to the two different printing systems involved. For that reason, the colours represented in the catalogue should be considered for illustrative purposes only.